

Recombinant Human ALDH1L1 Protein, GST-tagged

Cat. No. ALDH1L1-442H **Lot. No.** (See product label)

SPECIFICATION

Product Overview	Human ALDH1L1 partial ORF (NP_036322, 803 a.a. - 902 a.a.) recombinant protein with GST-tag at N-terminal.
Species	Human
Source	Wheat Germ
ProteinLength	803-902 aa
Description	The protein encoded by this gene catalyzes the conversion of 10-formyltetrahydrofolate, nicotinamide adenine dinucleotide phosphate (NADP+), and water to tetrahydrofolate, NADPH, and carbon dioxide. The encoded protein belongs to the aldehyde dehydrogenase family. Loss of function or expression of this gene is associated with decreased apoptosis, increased cell motility, and cancer progression. There is an antisense transcript that overlaps on the opposite strand with this gene locus. Alternative splicing results in multiple transcript variants. [provided by RefSeq, Jun 2012]
Molecular Mass	36.74 kDa
AA Sequence	EESFGPVMIIISRFADGDLDAVLSRANATEFGLASGVFTRDINKALYVSDKLQAGTVFV NTYNKTDVAAPFGGFKQSGFGKDLGEAALNEYLRVKTVTFEY
Applications	Enzyme-linked Immunoabsorbent Assay; Western Blot (Recombinant protein); Antibody Production; Protein Array

 Tel: 1-631-559-9269 1-516-512-3133

 Email: info@creative-biomart.com  Fax: 1-631-938-8127

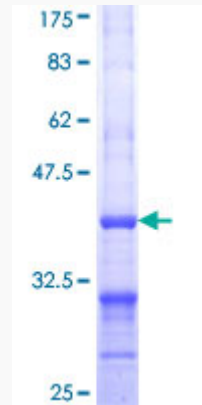
 45-1 Ramsey Road, Shirley, NY 11967, USA

Notes	Best use within three months from the date of receipt of this protein.
Storage	Store at -80 centigrade. Aliquot to avoid repeated freezing and thawing.
Storage Buffer	50 mM Tris-HCl, 10 mM reduced Glutathione, pH=8.0 in the elution buffer.
GENE INFORMATION	
Gene Name	ALDH1L1 aldehyde dehydrogenase 1 family, member L1 [Homo sapiens]
Official Symbol	ALDH1L1
Synonyms	ALDH1L1; aldehyde dehydrogenase 1 family, member L1; formyltetrahydrofolate dehydrogenase , FTHFD; cytosolic 10-formyltetrahydrofolate dehydrogenase; 10 fTHF; cytosolic 10 formyltetrahydrofolate dehydrogenase; 10-FTHFDH; formyltetrahydrofolate dehydrogenase; 10-formyltetrahydrofolate dehydrogenase; aldehyde dehydrogenase family 1 member L1; FDH; FTHFD; 10-fTHF; DKFZp781N0997;
Gene ID	10840
mRNA Refseq	NM_012190
Protein Refseq	NP_036322
MIM	600249
UniProt ID	O75891

 Tel: 1-631-559-9269 1-516-512-3133

 Email: info@creative-biomart.com  Fax: 1-631-938-8127

 45-1 Ramsey Road, Shirley, NY 11967, USA



12.5% SDS-PAGE Stained with Coomassie Blue.

 Tel: 1-631-559-9269 1-516-512-3133

 Email: info@creative-biomart.com  Fax: 1-631-938-8127

 45-1 Ramsey Road, Shirley, NY 11967, USA