

Recombinant Human ALDH1L1 Protein, Myc/DDK-tagged, C13 and N15-labeled

Cat. No. ALDH1L1-5813H **Lot. No.** (See product label)

SPECIFICATION

Product Overview

ALDH1L1 MS Standard C13 and N15-labeled recombinant protein (NP_036322) with a C-terminal MYC/DDK tag, was expressed in HEK293 cells.

Species

Human

Source

HEK293

Description

The protein encoded by this gene catalyzes the conversion of 10-formyltetrahydrofolate, nicotinamide adenine dinucleotide phosphate (NADP⁺), and water to tetrahydrofolate, NADPH, and carbon dioxide. The encoded protein belongs to the aldehyde dehydrogenase family. Loss of function or expression of this gene is associated with decreased apoptosis, increased cell motility, and cancer progression. There is an antisense transcript that overlaps on the opposite strand with this gene locus. Alternative splicing results in multiple transcript variants.

Molecular Mass

98.6 kDa

AA Sequence

MKIAVIGQSLFGQEYVYCHLRKEGHEVVGVTVPDKDGKADPLGLEAEKDGVPVFKY
 SRWRAKGQALPDVVAKYQALGAELNVLPFCSQFIPMEIISAPRHGSIYHPSSLPRHR
 GASAINWTLIHGDKKGGFSIFWADDGLDTGDLQLLQKECEVLPDDTVSTLYNRFLFPE
 GIKGMVQAVRLIAEGKAPRLPQPEEGATYEGIQKKETAKINWDQPAEAIHNWIRGND
 KVPGAWTEACEQKLTFFNSTLNTSGLVPEGDALPIPGAHRPGVVTKAGLILFGNDDK
 MLLVKNIQLEDGKMILASNFFKGAASSVLELTEAELVTAEAVRSFWQRILPKVLEVED

 Tel: 1-631-559-9269 1-516-512-3133

 Email: info@creative-biomart.com  Fax: 1-631-938-8127

 45-1 Ramsey Road, Shirley, NY 11967, USA

STDFFKSGAASVDVVRLVEEVKELCDGLELENEVDYMASTFGDFIQLLVRKLRGHDE
 EGECSIDYVEMAVNKRTVRMPHQLFIGGEFVDAEAGAKTSETINPTDGSVICQVSLAQ
 VTDVDKAVAAAKDAFENGRWGKIGARDRGRMLYRLADLMEQHQEELATIEALDAGA
 VYTLALKTHVGMISQTFRYFAGWCDKIQGSTIPINQARPNRNLTLTRKEPVGVCIIIP
 WNYPLMMLSWKTAACLAAGNTVVIKPAQVTPLTALKFAELTLKAGIPKGVVNVLPGS
 GSLVGQRLSDHPDVRKIGFTGSTEVGKHIMKSCAISNVKKSLELGGKSPLIIFADCD
 LNKAVQMGMSSVFFNKGENCIAAGRLFVEDSIHDEFVRRVVEEVRKMKVGNPLDRD
 TDHGPNQNHHAHLVKLMEYQCQHGVEKATLVCGGNQVPRPGFFFEPTVFTDVEDHM
 FIAKEESFGPVMIIISRFADGDLDAVLSRANATEFGLASGVFTRDINKALYVSDKLQAG
 TVFVNTYNKTDVAAPFGGFKQSGFGKDLGEAALNEYLRVKTVTFEYTRTRPLEQKLI
 SEEDLAANDILDYKDDDDKV

Purity > 80% as determined by SDS-PAGE and Coomassie blue staining

Stability Stable for 3 months from receipt of products under proper storage and handling conditions.

Storage Store at -80 centigrade. Avoid repeated freeze-thaw cycles.

Concentration 50 µg/mL as determined by BCA

Storage Buffer 100 mM glycine, 25 mM Tris-HCl, pH 7.3.

GENE INFORMATION

Gene Name [ALDH1L1 aldehyde dehydrogenase 1 family member L1 \[Homo sapiens \(human\) \]](#)

Official Symbol [ALDH1L1](#)

Synonyms ALDH1L1; aldehyde dehydrogenase 1 family, member L1; formyltetrahydrofolate dehydrogenase, FTHFD; cytosolic 10-formyltetrahydrofolate dehydrogenase; 10

 Tel: 1-631-559-9269 1-516-512-3133

 Email: info@creative-biomart.com  Fax: 1-631-938-8127

 45-1 Ramsey Road, Shirley, NY 11967, USA

fTHF; cytosolic 10 formyltetrahydrofolate dehydrogenase; 10-FTHFDH; formyltetrahydrofolate dehydrogenase; 10-formyltetrahydrofolate dehydrogenase; aldehyde dehydrogenase family 1 member L1; FDH; FTHFD; 10-fTHF; DKFZp781N0997;

Gene ID 10840

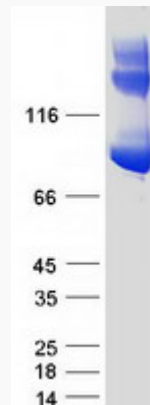
mRNA Refseq NM_012190

Protein Refseq NP_036322

MIM 600249

UniProt ID O75891

SDS-PAGE



 Tel: 1-631-559-9269 1-516-512-3133

 Email: info@creative-biomart.com  Fax: 1-631-938-8127

 45-1 Ramsey Road, Shirley, NY 11967, USA