

Recombinant Human ALDH2 protein, His-tagged

Cat. No. ALDH2-4612H Lot. No. (See product label)

SPECIFICATION

Product Overview	Recombinant Human ALDH2 protein(P05091)(18-517 aa), fused with C-terminal His tag, was expressed in E.coli.
Species	Human
Source	E.coli
ProteinLength	18-517 aa
Form	For liquid formulations, the standard storage buffer consists of a Tris or PBS based solution supplemented with 5-50% glycerol. When provided as lyophilized powder, the product undergoes freeze-drying from a Tris- or PBS-based formulation containing 6% trehalose, adjusted to pH 8.0 prior to the lyophilization process.
Molecular Mass	61.4 kDa
AASequence	SAAATQAVPAPNQQPEVFCNQIFINNEWHDAVSRKTFPTVNPSTGEVICQVAEGDK EDVDKAVKAARAAFQLGSPWRRMDASHRGRLNRLADLIERDRTYLAALETLDNGK PYVISYLVLDMLKCLRYAGWADKYHGKTIPIDGDFFSYTRHEPVGVCQQIIPWN FPLLMQAWKLGALATGNVVMKVAEQTPLTALYVANLIKEAGFPPGVVNIIVPGFGP TAGAAIASHEDVDKVAFTGSTEIGRVIQVAAGSSNLKRVTLLELGGKSPNIIMSDADMD WAVEQAHFALFFNQGCCAGSRTFVQEDIYDEFVRSVARAKSRVVGNNPFDSKT EQGPQVDETQFKILGYINTGKQEGAKLLCGGGIAADRGYFIQPTVFGDVQDGMTIA KEEIFGPVMQILKFKTIEEVGRANNSTYGLAAAVFTKDLDKANYLSQALQAGTVVW NCYDVFGAQSPFGGYKMSGSGRELGEYGLQAYTEVKTVTVKVPQKNS

 Tel: 1-631-559-9269 1-516-512-3133

 Email: info@creative-biomart.com  Fax: 1-631-938-8127

 45-1 Ramsey Road, Shirley, NY 11967, USA

Purity	Greater than 85% as determined by SDS-PAGE.
Storage	Store at -20°C/-80°C upon receipt, aliquoting is necessary for mutiple use. Avoid repeated freeze-thaw cycles.
Reconstitution	Please reconstitute protein indeionized sterile water to a concentration of 0.1-1.0 mg/mL. Aliquot for long-term storage at -80°C.

GENE INFORMATION

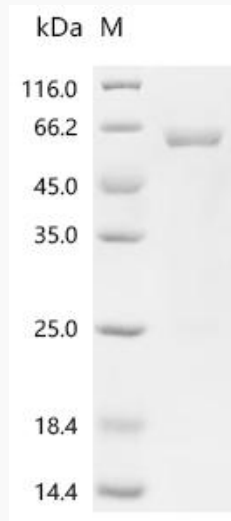
Gene Name	ALDH2 aldehyde dehydrogenase 2 family (mitochondrial) [Homo sapiens]
Official Symbol	ALDH2
Synonyms	ALDH2; aldehyde dehydrogenase 2 family (mitochondrial); aldehyde dehydrogenase, mitochondrial; ALDH class 2; liver mitochondrial ALDH; acetaldehyde dehydrogenase 2; nucleus-encoded mitochondrial aldehyde dehydrogenase 2; ALDM; ALDHI; ALDH-E2; MGC1806;
Gene ID	217
mRNA Refseq	NM_000690
Protein Refseq	NP_000681
UniProt ID	P05091

 Tel: 1-631-559-9269 1-516-512-3133

 Email: info@creative-biomart.com  Fax: 1-631-938-8127

 45-1 Ramsey Road, Shirley, NY 11967, USA

SDS-PAGE



 Tel: 1-631-559-9269 1-516-512-3133

 Email: info@creative-biomart.com  Fax: 1-631-938-8127

 45-1 Ramsey Road, Shirley, NY 11967, USA