

Recombinant Human ALDH2 protein, His-tagged

Cat. No. ALDH2-6755H Lot. No. (See product label)

SPECIFICATION

Product Overview Recombinant Human ALDH2 protein(165-517 aa), fused with N-terminal His tag, was expressed in E. coli.

Species Human

Source E.coli

ProteinLength 165-517 aa

Tag N-His

Form The purified protein was Lyophilized from sterile PBS (58mM Na₂HPO₄, 17mM NaH₂PO₄, 68mM NaCl, pH7.4). 5 % trehalose and 5 % mannitol are added as protectant before lyophilization.

Purity 90%, by SDS-PAGE with Coomassie Brilliant Blue staining.

Storage Short-term storage: Store at 2-8°C for (1-2 weeks). Long-term storage: Aliquot and store at -20°C to -80°C for up to 3 months, reconstitution with sterile water and addition of an equal volume of glycerol. Avoid repeat freeze-thaw cycles.

Reconstitution Reconstitute at 0.25 µg/µl in 200 µl sterile water for short-term storage. After reconstitution with sterile water, if glycerol has no effect on subsequent experiments, it is recommended to add an equal volume of glycerol for long-term storage.

 Tel: 1-631-559-9269 1-516-512-3133

 Email: info@creative-biomart.com  Fax: 1-631-938-8127

 45-1 Ramsey Road, Shirley, NY 11967, USA

AA Sequence

GDFFSYTRHEPVGVCQIIPWNFLLMQAWKLGPALATGNVVVMKVAEQTPLTALY
 VANLIKEAGFPPGVNIVPGFGPTAGAAIASHEDVDKVAFTGSTEIGRVIQVAAGSSN
 LKRVTLELGGKSPNIIMSDADMWAVEQAHFALFFNQGCCAGSRTFVQEDIYDE
 FVERSVARAKSRVVGPNPFSKTEQGPQVDETQFKKILGYINTGKQEGAKLLCGGGIA
 ADRGYFIQPTVFGDVQDGMTIAKEEIFGPVMQILKFKTIEEVVGRANNSTYGLAAAVF
 TKDLDKANYLSQALQAGTVVWNCYDVFGAQSPFGGYKMSGSGRELGEYGLQAYTE
 VKTIVTKVPQKNS

GENE INFORMATION

Gene Name [ALDH2 aldehyde dehydrogenase 2 family \(mitochondrial\) \[Homo sapiens \]](#)

Official Symbol [ALDH2](#)

Synonyms

ALDH2; aldehyde dehydrogenase 2 family (mitochondrial); aldehyde dehydrogenase, mitochondrial; ALDH class 2; liver mitochondrial ALDH; acetaldehyde dehydrogenase 2; nucleus-encoded mitochondrial aldehyde dehydrogenase 2; ALDM; ALDHI; ALDH-E2; MGC1806;

Gene ID [217](#)

mRNA Refseq [NM_000690](#)

Protein Refseq [NP_000681](#)

UniProt ID [P05091](#)

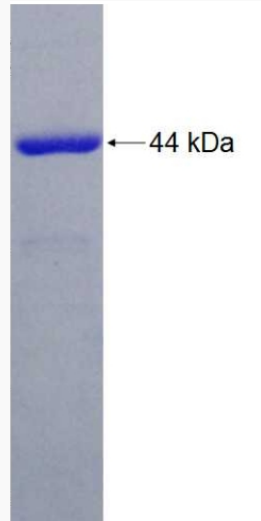
 Tel: 1-631-559-9269 1-516-512-3133

 Email: info@creative-biomart.com  Fax: 1-631-938-8127

 45-1 Ramsey Road, Shirley, NY 11967, USA



SDS-PAGE



Tel: 1-631-559-9269 1-516-512-3133

Email: info@creative-biomart.com Fax: 1-631-938-8127

45-1 Ramsey Road, Shirley, NY 11967, USA