

# Recombinant Human ALDH3A1 Protein, Myc/DDK-tagged, C13 and N15-labeled

**Cat. No.** ALDH3A1-2876H    **Lot. No.** (See product label)

## SPECIFICATION

<b>Product Overview</b>	ALDH3A1 MS Standard C13 and N15-labeled recombinant protein (NP_001128639) with a C-terminal MYC/DDK tag, was expressed in HEK293 cells.
<b>Species</b>	Human
<b>Source</b>	HEK293
<b>Description</b>	Aldehyde dehydrogenases oxidize various aldehydes to the corresponding acids. They are involved in the detoxification of alcohol-derived acetaldehyde and in the metabolism of corticosteroids, biogenic amines, neurotransmitters, and lipid peroxidation. The enzyme encoded by this gene forms a cytoplasmic homodimer that preferentially oxidizes aromatic and medium-chain (6 carbons or more) saturated and unsaturated aldehyde substrates. It is thought to promote resistance to UV and 4-hydroxy-2-nonenal-induced oxidative damage in the cornea. The gene is located within the Smith-Magenis syndrome region on chromosome 17. Multiple alternatively spliced variants, encoding the same protein, have been identified.
<b>Molecular Mass</b>	50.2 kDa
<b>AA Sequence</b>	MSKISEAVKRARA AFSSGRTRPLQFRIQQLEALQR LIQEQQELVGALAADLHKNEW NAYYEEVVVYVLEEIEYMIQKLPEWAADEPVEKTPQTQQDELYIHSEPLGVVLVIGTW NYPFNLTIQPMVGAIAAGNSVVLKPS ELS ENMASLLATIIPQYLDKDLYPVINGGVPET TELLKERFDHILYTGSTGVGKIIMTAAAKHLTPVTLELGGKSPCYVDKNCDL DVACRR

 Tel: 1-631-559-9269    1-516-512-3133

 Email: [info@creative-biomart.com](mailto:info@creative-biomart.com)     Fax: 1-631-938-8127

 45-1 Ramsey Road, Shirley, NY 11967, USA

IAWGKFMNSGQTCVAPDYILCDPSIQNQIVEKLLKSLKEFYGEDAKKSRDYGRIISAR  
 HFQRVMGLIEGQKVAYGGTGDAATRYIAPTILTDVDPQSPVMQEEIFGPVLPVIVCVRS  
 LEEAIQFINQREKPLALYMFSSNDKVIKKMIAETSSGGVAANDVIVHITLHSLPFGGVG  
 NSGMGSYHGKKSFETFSHRRSCLVRPLMNDEGLKVRYPSPAKMTQHTRTRPLEQ  
 KLISEEDLAANDILDYKDDDDKV

**Purity** > 80% as determined by SDS-PAGE and Coomassie blue staining

**Stability** Stable for 3 months from receipt of products under proper storage and handling conditions.

**Storage** Store at -80 centigrade. Avoid repeated freeze-thaw cycles.

**Concentration** 50 µg/mL as determined by BCA

**Storage Buffer** 100 mM glycine, 25 mM Tris-HCl, pH 7.3.

## GENE INFORMATION

**Gene Name** [ALDH3A1 aldehyde dehydrogenase 3 family member A1 \[ Homo sapiens \(human\) \]](#)

**Official Symbol** [ALDH3A1](#)

**Synonyms** ALDH3A1; aldehyde dehydrogenase 3 family, member A1; ALDH3; aldehyde dehydrogenase, dimeric NADP-preferring; aldehyde dehydrogenase; dimeric NADP preferring; stomach aldehyde dehydrogenase; aldehyde dehydrogenase type III; aldehyde dehydrogenase isozyme 3; ALDHIII; MGC10406;

**Gene ID** [218](#)

**mRNA Refseq** [NM\\_001135167](#)

 Tel: 1-631-559-9269 1-516-512-3133

 Email: [info@creative-biomart.com](mailto:info@creative-biomart.com)  Fax: 1-631-938-8127

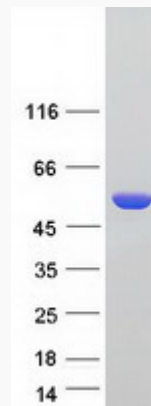
 45-1 Ramsey Road, Shirley, NY 11967, USA

**Protein Refseq** NP\_001128639

**MIM** 100660

**UniProt ID** P30838

**SDS-PAGE**



 Tel: 1-631-559-9269 1-516-512-3133

 Email: [info@creative-biomart.com](mailto:info@creative-biomart.com)  Fax: 1-631-938-8127

 45-1 Ramsey Road, Shirley, NY 11967, USA