

## Recombinant Human ALDH3A1 Protein, GST-tagged

**Cat. No.** ALDH3A1-445H    **Lot. No.** (See product label)

### SPECIFICATION

<b>Product Overview</b>	Human ALDH3A1 full-length ORF ( AAH04370, 1 a.a. - 453 a.a.) recombinant protein with GST-tag at N-terminal.
<b>Species</b>	Human
<b>Source</b>	Wheat Germ
<b>Description</b>	Aldehyde dehydrogenases oxidize various aldehydes to the corresponding acids. They are involved in the detoxification of alcohol-derived acetaldehyde and in the metabolism of corticosteroids, biogenic amines, neurotransmitters, and lipid peroxidation. The enzyme encoded by this gene forms a cytoplasmic homodimer that preferentially oxidizes aromatic and medium-chain (6 carbons or more) saturated and unsaturated aldehyde substrates. It is thought to promote resistance to UV and 4-hydroxy-2-nonenal-induced oxidative damage in the cornea. The gene is located within the Smith-Magenis syndrome region on chromosome 17. Multiple alternatively spliced variants, encoding the same protein, have been identified. [provided by RefSeq, Sep 2008]
<b>Molecular Mass</b>	75.35 kDa
<b>AA Sequence</b>	MSKISEAVKRARAAFSSGRTRPLQFRIQQLEALQRLIQEQEQELVGALAADLHKNEW NAYYEEVVVYVLEEIEYMIQKLPEWAADEPVEKTPQTQQDELYIHSEPLGVVLVIGTW NYPFNLTIQPMVGAIAAGNAVVLKPSSELSMASLLATIIPQYLDKDLYPVINGGVPET TELLKERFDHILYTGSTGVGKIIMTAAAKHLTPVTLELGGKSPCYVDKNCDLDVACRR

 Tel: 1-631-559-9269    1-516-512-3133

 Email: [info@creative-biomart.com](mailto:info@creative-biomart.com)     Fax: 1-631-938-8127

 45-1 Ramsey Road, Shirley, NY 11967, USA

IAWGKFMNSGQTCVAPDYILCDPSIQNQIVEKLLKSLKEFYGEDAKKSRDYGRIISAR  
 HFQRVMGLIEGQKVAYGGTGDAATRYIAPTILTDGDPQSPVMQEEIFGPVLPVIVCVR  
 SLEEAIQFINQREKPLALYMFSSNDKVIKKMIAETSSGGVAANDVIVHITLHSLPFGGV  
 GNSGMGSYHGKKSFEFESHRRSCLVRPLMNDGGLKVRYPPSPAKMTQH

**Applications**

Enzyme-linked Immunoabsorbent Assay; Western Blot (Recombinant protein);  
 Antibody Production; Protein Array

**Notes**

Best use within three months from the date of receipt of this protein.

**Storage**

Store at -80 centigrade. Aliquot to avoid repeated freezing and thawing.

**Storage Buffer**

50 mM Tris-HCl, 10 mM reduced Glutathione, pH=8.0 in the elution buffer.

## GENE INFORMATION

**Gene Name**

[ALDH3A1 aldehyde dehydrogenase 3 family, member A1 \[ Homo sapiens \]](#)

**Official Symbol**

[ALDH3A1](#)

**Synonyms**

ALDH3A1; aldehyde dehydrogenase 3 family, member A1; ALDH3; aldehyde dehydrogenase, dimeric NADP-preferring; aldehyde dehydrogenase; dimeric NADP preferring; stomach aldehyde dehydrogenase; aldehyde dehydrogenase type III; aldehyde dehydrogenase isozyme 3; ALDHIII; MGC10406;

**Gene ID**

[218](#)

**mRNA Refseq**

[NM\\_000691](#)

**Protein Refseq**

[NP\\_000682](#)

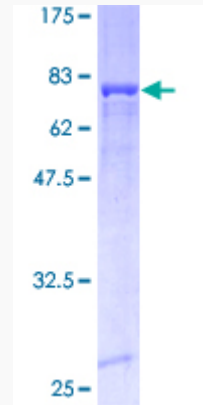
 Tel: 1-631-559-9269 1-516-512-3133

 Email: [info@creative-biomart.com](mailto:info@creative-biomart.com)  Fax: 1-631-938-8127

 45-1 Ramsey Road, Shirley, NY 11967, USA

**MIM** 100660

**UniProt ID** P30838



12.5% SDS-PAGE Stained with Coomassie Blue.

 Tel: 1-631-559-9269 1-516-512-3133

 Email: [info@creative-biomart.com](mailto:info@creative-biomart.com)  Fax: 1-631-938-8127

 45-1 Ramsey Road, Shirley, NY 11967, USA