

Recombinant Full Length Human ALDH4A1 Protein, C-Flag-tagged

Cat. No. ALDH4A1-695HFL **Lot. No.** (See product label)

SPECIFICATION

Product Overview	Recombinant Full Length Human ALDH4A1 Protein, fused to Flag-tag at C-terminus, was expressed in Mammalian cells.
Species	Human
Source	Mammalian Cells
Description	This protein belongs to the aldehyde dehydrogenase family of proteins. This enzyme is a mitochondrial matrix NAD-dependent dehydrogenase which catalyzes the second step of the proline degradation pathway, converting pyrroline-5-carboxylate to glutamate. Deficiency of this enzyme is associated with type II hyperprolinemia, an autosomal recessive disorder characterized by accumulation of delta-1-pyrroline-5-carboxylate (P5C) and proline. Alternatively spliced transcript variants encoding different isoforms have been identified for this gene.
Form	25 mM Tris HCl, pH 7.3, 100 mM glycine, 10% glycerol.
Molecular Mass	59 kDa
AA Sequence	MLLPAPALRRALLSRPWTGAGLRWKHTSSLKVANEPVLAFTQGSPERDALQKALKD LKGRMEAIPC VVGDEEVWTS DVQYQVSPFNHGHK VAKFCYADKSLLNKAIEAALAA RKEWDLKPIADRAQIFLKAADMLSGPRR AEILAKTMVGGQKTVIQAEIDAAAELIDFF RFNAKYAVELEGQQPISVPPSTNSTVYRGLEGFVAAISPF NFTAIGGNLAGAPALMG NVVLWKPSDTAMLASYAVYRILREAGLPPNIIQFVPADGPLFGDVTSSSEHLC GINFT

 Tel: 1-631-559-9269 1-516-512-3133

 Email: info@creative-biomart.com  Fax: 1-631-938-8127

 45-1 Ramsey Road, Shirley, NY 11967, USA

GSVPTFKHLWKQVAQNLDRFHTFPRLAGECGGKNFHFVHRSADVESVVSGLRSA
 FEYGGQKCSA CSRLYVPHSLWPQIKGRLLLEHSRIKVGDPaedFGTFFSAVIDAKSF
 ARIKKWLEHARSSPSLTILAGGK CDDSVGYFVEPCIVESKDPQEPIMKEEIFGPVLSV
 YVYPDDKYKETLQLVDSTTSYGLTGAVFSQDKDVV QEATKVLRNAAGNFYINDKST
 GSIVGQQPFGGARASGTNDKPGGPHYILRWTSQVIKETHKPLGDWSYA
 YMQSGPTRTRPLEQKLISEEDLAANDILDYKDDDDKV

Purity	> 80% as determined by SDS-PAGE and Coomassie blue staining.
Stability	Stable for 12 months from the date of receipt of the product under proper storage and handling conditions. Avoid repeated freeze-thaw cycles.
Storage	Store at -80 centigrade.
Concentration	>50 ug/mL as determined by microplate BCA method.
Preparation	Recombinant protein was captured through anti-DDK affinity column followed by conventional chromatography steps.
Protein Families	Druggable Genome
Protein Pathways	Alanine, aspartate and glutamate metabolism, Arginine and proline metabolism, Metabolic pathways
Full Length	Full L.

GENE INFORMATION

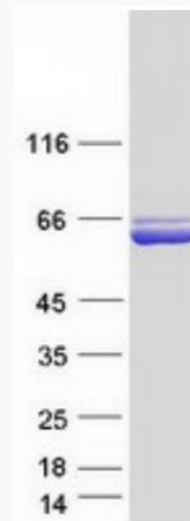
Gene Name	ALDH4A1 aldehyde dehydrogenase 4 family member A1 [Homo sapiens (human)]
Official Symbol	ALDH4A1

 Tel: 1-631-559-9269 1-516-512-3133

 Email: info@creative-biomart.com  Fax: 1-631-938-8127

 45-1 Ramsey Road, Shirley, NY 11967, USA

Synonyms	P5CD; ALDH4; P5CDh
Gene ID	8659
mRNA Refseq	NM_170726.3
Protein Refseq	NP_733844.1
MIM	606811
UniProt ID	P30038



Coomassie blue staining of purified ALDH4A1 protein.

Tel: 1-631-559-9269 1-516-512-3133

Email: info@creative-biomart.com Fax: 1-631-938-8127

45-1 Ramsey Road, Shirley, NY 11967, USA