

Recombinant Human ALDH5A1 protein, His-tagged

Cat. No. ALDH5A1-9562H **Lot. No.** (See product label)

SPECIFICATION

Product Overview	Recombinant Human ALDH5A1 protein(175-535 aa), fused with N-terminal His tag, was expressed in E. coli.
Species	Human
Source	E.coli
ProteinLength	175-535 aa
Tag	N-His
Form	The purified protein was Lyophilized from sterile PBS (58mM Na ₂ HPO ₄ , 17mM NaH ₂ PO ₄ , 68mM NaCl, pH7.4). 5 % trehalose and 5 % mannitol are added as protectant before lyophilization.
Purity	85%, by SDS-PAGE with Coomassie Brilliant Blue staining.
Storage	Short-term storage: Store at 2-8°C for (1-2 weeks). Long-term storage: Aliquot and store at -20°C to -80°C for up to 3 months, reconstitution with sterile water and addition of an equal volume of glycerol. Avoid repeat freeze-thaw cycles.
Reconstitution	Reconstitute at 0.25 µg/µl in 200 µl sterile water for short-term storage. After reconstitution with sterile water, if glycerol has no effect on subsequent experiments, it is recommended to add an equal volume of glycerol for long-term storage.

 Tel: 1-631-559-9269 1-516-512-3133

 Email: info@creative-biomart.com  Fax: 1-631-938-8127

 45-1 Ramsey Road, Shirley, NY 11967, USA

AA Sequence

YGDIIHTPAKDRRALVLKQPIGVAAVITPWNFPSAMITRKVGAALAAGCTVVVKPAED
 TPFSALALAEASQAGIPSGVYNVIPCSRKNAKEVGEAICTDPLVSKISFTGSTTTGKI
 LLHHAANSVKRVSMELGGLAPFIVFDSANVDQAVAGAMASKFRNTGQTCVCSNQFL
 VQRGIHDAFVKAFEAEMKKNLRVGNNGFEEGTTQGPLINEKAVEKVEKQVNDVAVSKG
 ATVVTTGGKRHQLGKNFFEPTLLCNVTQDMLCTHEETFGPLAPVIKFDTEEEAIAIANA
 ADVGLAGYFYSQDPAQIWRVAEQLEVGMVGVNEGLISSVECPFGGVKQSGLGREG
 SKYGIDEYLELKYVCYGG

GENE INFORMATION

Gene Name [ALDH5A1 aldehyde dehydrogenase 5 family, member A1 \[Homo sapiens \]](#)

Official Symbol [ALDH5A1](#)

Synonyms

ALDH5A1; aldehyde dehydrogenase 5 family, member A1; succinate-semialdehyde dehydrogenase, mitochondrial; SSADH; SSDH; succinate semialdehyde dehydrogenase; aldehyde dehydrogenase family 5 member A1; mitochondrial succinate semialdehyde dehydrogenase; NAD(+)-dependent succinic semialdehyde dehydrogenase;

Gene ID [7915](#)

mRNA Refseq [NM_001080](#)

Protein Refseq [NP_001071](#)

MIM [610045](#)

UniProt ID [P51649](#)

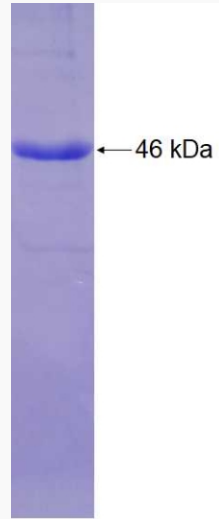
 Tel: 1-631-559-9269 1-516-512-3133

 Email: info@creative-biomart.com  Fax: 1-631-938-8127

 45-1 Ramsey Road, Shirley, NY 11967, USA



SDS-PAGE



Tel: 1-631-559-9269 1-516-512-3133

Email: info@creative-biomart.com Fax: 1-631-938-8127

45-1 Ramsey Road, Shirley, NY 11967, USA