

Recombinant Human ALDH6A1 Protein, Myc/DDK-tagged, C13 and N15-labeled

Cat. No. ALDH6A1-5797H **Lot. No.** (See product label)

SPECIFICATION

Product Overview	ALDH6A1 MS Standard C13 and N15-labeled recombinant protein (NP_005580) with a C-terminal MYC/DDK tag, was expressed in HEK293 cells.
Species	Human
Source	HEK293
Description	This gene encodes a member of the aldehyde dehydrogenase protein family. The encoded protein is a mitochondrial methylmalonate semialdehyde dehydrogenase that plays a role in the valine and pyrimidine catabolic pathways. This protein catalyzes the irreversible oxidative decarboxylation of malonate and methylmalonate semialdehydes to acetyl- and propionyl-CoA. Methylmalonate semialdehyde dehydrogenase deficiency is characterized by elevated beta-alanine, 3-hydroxypropionic acid, and both isomers of 3-amino and 3-hydroxyisobutyric acids in urine organic acids. Alternate splicing results in multiple transcript variants.
Molecular Mass	57.8 kDa
AA Sequence	MAALLAAAVRARILQVSSKVKSSPTWYSASSFSSSVPTVKLFIGGKFVESKSDKWI DIHNPATNEVIGRVPQATKAEMDAAIASCKRAFPADWTSVLSRQQVLLRYQQLIKE NLKEIAKLITLQGGKTLADAEGDVFRGLQVVEHACSVTSLMMGETMPSITKDMDLYS YRLPLGVCAGIAPFNFPAMIPLWMFPMAMVCGNTFLMKPSERVPGATMLLAKLLQD SGAPDGTLNIIHGQHEAVNFICDHPDIKAISFVGSNKAGEYIFERGSRHGKRVQANM

 Tel: 1-631-559-9269 1-516-512-3133

 Email: info@creative-biomart.com  Fax: 1-631-938-8127

 45-1 Ramsey Road, Shirley, NY 11967, USA

GAKNHGVVMPDANKENTLNQLVGAAFGAAGQRCMALSTAVLVGEAKKWLPELVEH
 AKNLRVNAGDQPGADLGPLITPQAKERVCNLIDSGTKEGASILLDRKIKVKGYENG
 NFGVPTIISNVKPNMTCYKEEIFGPVLVVLETETLDEAIQIVNNNPYGNGTAFITNGA
 TARKY AHLVDVGQVGVNVPVPLPMFSFTGSRSSFRGDTNFYKQGGIQFYTQLKTI
 TSQWKEEDATLSSPAVVMPTMGRTRTRPLEQKLISEEDLAANDILDYKDDDDKV

Purity > 80% as determined by SDS-PAGE and Coomassie blue staining

Stability Stable for 3 months from receipt of products under proper storage and handling conditions.

Storage Store at -80 centigrade. Avoid repeated freeze-thaw cycles.

Concentration 50 µg/mL as determined by BCA

Storage Buffer 100 mM glycine, 25 mM Tris-HCl, pH 7.3.

GENE INFORMATION

Gene Name [ALDH6A1 aldehyde dehydrogenase 6 family member A1 \[Homo sapiens \(human\) \]](#)

Official Symbol [ALDH6A1](#)

Synonyms ALDH6A1; aldehyde dehydrogenase 6 family, member A1; MMSDH; methylmalonate-semialdehyde dehydrogenase [acylating], mitochondrial; malonate-semialdehyde dehydrogenase; aldehyde dehydrogenase family 6 member A1; mitochondrial acylating methylmalonate-semialdehyde dehydrogenase; MMSADHA; MGC40271;

Gene ID [4329](#)

mRNA Refseq [NM_005589](#)

 Tel: 1-631-559-9269 1-516-512-3133

 Email: info@creative-biomart.com  Fax: 1-631-938-8127

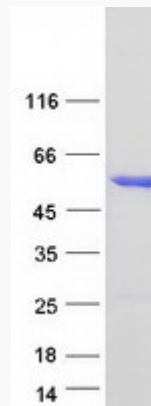
 45-1 Ramsey Road, Shirley, NY 11967, USA

Protein Refseq [NP_005580](#)

MIM [603178](#)

UniProt ID [Q02252](#)

SDS-PAGE



 Tel: 1-631-559-9269 1-516-512-3133

 Email: info@creative-biomart.com  Fax: 1-631-938-8127

 45-1 Ramsey Road, Shirley, NY 11967, USA