

## Recombinant Human ALDH7A1 Protein (Met1-Gln539), N-His-tagged

Cat. No. ALDH7A1-0391H Lot. No. (See product label)

### SPECIFICATION

<b>Product Overview</b>	Recombinant human ALDH7A1 (Met1-Gln539) was fused with the N-His tag and was expressed in E. coli.
<b>Species</b>	Human
<b>Source</b>	E.coli
<b>ProteinLength</b>	Met1-Gln539
<b>Form</b>	Lyophilized powder/frozen liquid
<b>Molecular Mass</b>	60.80 kDa
<b>Purity</b>	>90% as determined by SDS-PAGE
<b>Notes</b>	For research use only.
<b>Storage</b>	Use a manual defrost freezer and avoid repeated freeze thaw cycles. Store at 2 to 8 centigrade for one week. Store at -20 to -80 centigrade for twelve months from the date of receipt.
<b>Storage Buffer</b>	0.01M PBS, pH 7.4, 0.02% NLS
<b>Reconstitution</b>	Reconstitute in sterile water for a stock solution.

 Tel: 1-631-559-9269 1-516-512-3133

 Email: [info@creative-biomart.com](mailto:info@creative-biomart.com)  Fax: 1-631-938-8127

 45-1 Ramsey Road, Shirley, NY 11967, USA

**Shipping** They are shipped out with dry ice/blue ice unless customers require otherwise.

## GENE INFORMATION

**Gene Name** ALDH7A1 aldehyde dehydrogenase 7 family, member A1 [ Homo sapiens (human) ]

**Official Symbol** ALDH7A1

**Synonyms** ALDH7A1; aldehyde dehydrogenase 7 family, member A1; ATQ1; alpha-aminoadipic semialdehyde dehydrogenase; 26g turgor protein homolog; alpha AASA dehydrogenase; alpha aminoadipic semialdehyde dehydrogenase; antiquitin 1; delta1 piperideine 6 carboxylate dehydrogenase; EPD; P6c dehydrogenase; PDE; antiquitin-1; alpha-AASA dehydrogenase; betaine aldehyde dehydrogenase; delta1-piperideine-6-carboxylate dehydrogenase; FLJ11738; FLJ92814;

**Gene ID** 501

**mRNA Refseq** NM\_001182

**Protein Refseq** NP\_001173

**MIM** 107323

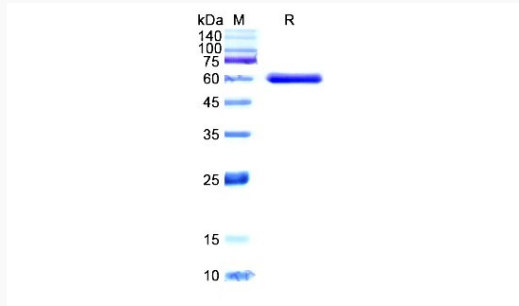
**UniProt ID** P49419

 Tel: 1-631-559-9269 1-516-512-3133

 Email: [info@creative-biomart.com](mailto:info@creative-biomart.com)  Fax: 1-631-938-8127

 45-1 Ramsey Road, Shirley, NY 11967, USA

**SDS-PAGE**



 Tel: 1-631-559-9269 1-516-512-3133

 Email: [info@creative-biomart.com](mailto:info@creative-biomart.com)  Fax: 1-631-938-8127

 45-1 Ramsey Road, Shirley, NY 11967, USA