

Active Recombinant Human ALDOA Protein, His tagged

Cat. No. ALDOA-1933H **Lot. No.** (See product label)

SPECIFICATION

Product Overview	Recombinant human Aldolase A, fused to His-tag at N-terminus, was expressed in E. coli and purified by using conventional chromatography techniques.
Species	Human
Source	E.coli
ProteinLength	1-364 aa
Description	<p>Fructose bisphosphate aldolase A, also known as Aldolase A is a glycolytic enzyme that catalyzes the reversible conversion of fructose-1, 6-bisphosphate to glyceraldehyde 3-phosphate and dihydroxyacetone phosphate. It is found in the developing embryo and is produced in even greater amounts in adult muscle. Aldolase A expression is repressed in adult liver, kidney and intestine and similar to aldolase C levels in brain and other nervous tissue. Deficiency has been associated with myopathy and hemolytic anemia.</p>
Form	Liquid in 20mM Tris-HCl buffer (pH 8.0) containing 100mM NaCl, 10% glycerol
Bio-activity	Specific activity is > 10 unit/mg, one unit will convert 1.0 μmol of fructose 1,6-diphosphate to dihydroxyacetone phosphate and glyceraldehydes 3-phosphate per minute at pH 7.5 at 37 centigrade.
Molecular Mass	41.5 kDa

 Tel: 1-631-559-9269 1-516-512-3133

 Email: info@creative-biomart.com  Fax: 1-631-938-8127

 45-1 Ramsey Road, Shirley, NY 11967, USA

AASequence	< MGSSHHHHHSSGLVPRGSH> MPYQYPALTPEQKKELSDIAHRIVAPGKGILAAD ESTGSIAKRLQSIGTENTEENRRFYRQLLLTADDRVNPCIGGVILFHETLYQKADDGR PFPQVIKSKGGVVGIVDKGVVPLAGTNGETTTQGLDGLSERCAQYKKDGADFAKW RCVLKIGEHTPSALAIMENANVLARYASICQQNGIVPIVEPEILPDGDHDLKRCQYVTE KVLAAVYKALSDHHIYLEGTLKPNMVTDPGHACTQKFSHEEIAMATVTALRRTVPPAV TGITFLSGGQSEEEASINLNAINKCPLLKPWALTFSYGRALQASALKAWGGKKENLK AAQEEYVKRALANSLACQGKYTPSGQAGAAASESLFVSNHAY
Purity	> 95% by SDS-PAGE
Applications	SDS-PAGE, Enzyme Activity
Notes	For research use only. This product is not intended or approved for human, diagnostics or veterinary use.
Storage	Can be stored at +2 to +8 centigrade for 1 week. For long term storage, aliquot and store at -20 to -80 centigrade. Avoid repeated freezing and thawing cycles.
Concentration	1 mg/mL (determined by Bradford assay)

GENE INFORMATION

Gene Name	ALDOA aldolase, fructose-bisphosphate A [Homo sapiens (human)]
Official Symbol	ALDOA
Synonyms	ALDOA; aldolase A, fructose-bisphosphate; fructose-bisphosphate aldolase A; muscle-type aldolase; lung cancer antigen NY-LU-1; fructose-1,6-bisphosphate triosephosphate-lyase; ALDA; GSD12
Gene ID	226

 Tel: 1-631-559-9269 1-516-512-3133

 Email: info@creative-biomart.com  Fax: 1-631-938-8127

 45-1 Ramsey Road, Shirley, NY 11967, USA

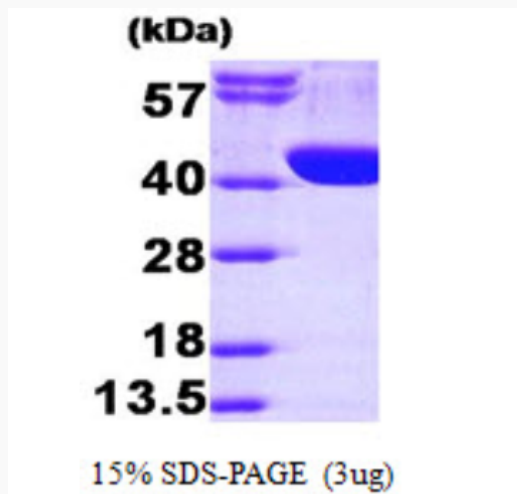
mRNA Refseq [NM_184041](#)

Protein Refseq [NP_908930](#)

MIM [103850](#)

UniProt ID [P04075](#)

SDS-PAGE



3 μ g by SDS-PAGE under reducing condition and visualized by coomassie blue stain.

 Tel: 1-631-559-9269 1-516-512-3133

 Email: info@creative-biomart.com  Fax: 1-631-938-8127

 45-1 Ramsey Road, Shirley, NY 11967, USA