

Recombinant Full Length Human ALDOA Protein, C-Flag-tagged

Cat. No. ALDOA-2138HFL **Lot. No.** (See product label)

SPECIFICATION

Product Overview	Recombinant Full Length Human ALDOA Protein, fused to Flag-tag at C-terminus, was expressed in Mammalian cells.
Species	Human
Source	Mammalian Cells
Description	This gene encodes a member of the class I fructose-bisphosphate aldolase protein family. The encoded protein is a glycolytic enzyme that catalyzes the reversible conversion of fructose-1,6-bisphosphate to glyceraldehyde 3-phosphate and dihydroxyacetone phosphate. Three aldolase isozymes (A, B, and C), encoded by three different genes, are differentially expressed during development. Mutations in this gene have been associated with Glycogen Storage Disease XII, an autosomal recessive disorder associated with hemolytic anemia. Disruption of this gene also plays a role in the progression of multiple types of cancers. Related pseudogenes have been identified on chromosomes 3 and 10.
Form	25 mM Tris HCl, pH 7.3, 100 mM glycine, 10% glycerol.
Molecular Mass	39.2 kDa
AA Sequence	MPYQYPALTPEQKKELSDIAHRIVAPGKGILAADESTGSIKRLQSIGTENTEENRRF YRQLLLTADDRV NPCIGGVILFHETLYQKADDGRPFQVIKSKGGVVGIVDKGVVP LAGTNGETTTQGLDGLSERCAQYKK DGADFAKWRCVLKIGEHTPSALAIMENANVL

 Tel: 1-631-559-9269 1-516-512-3133

 Email: info@creative-biomart.com  Fax: 1-631-938-8127

 45-1 Ramsey Road, Shirley, NY 11967, USA

ARYASICQQNGIVPIVEPEILPDGDHDLKRCQYVTEKVL AAVYKALSDHHIYLEGTLL
 KPNMVTPGHACTQKFSHEEIAMATVTALRRTVPPAVTGITFLSGGQSEEEA SINLNAI
 NKCPLLKPWALTFSYGRALQASALKAWGGKKENLAAQEEYVKRALANSLACQGK
 YTPSGQAG AAASESLFVSNHAY TRTRPLEQKLISEEDLAANDILDYKDDDDKV

Purity	> 80% as determined by SDS-PAGE and Coomassie blue staining.
Stability	Stable for 12 months from the date of receipt of the product under proper storage and handling conditions. Avoid repeated freeze-thaw cycles.
Storage	Store at -80 centigrade.
Concentration	>50 ug/mL as determined by microplate BCA method.
Preparation	Recombinant protein was captured through anti-DDK affinity column followed by conventional chromatography steps.
Protein Families	Druggable Genome
Protein Pathways	Fructose and mannose metabolism, Glycolysis / Gluconeogenesis, Metabolic pathways, Pentose phosphate pathway
Full Length	Full L.

GENE INFORMATION

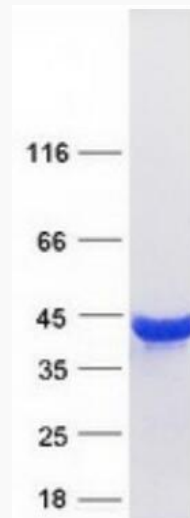
Gene Name	ALDOA aldolase, fructose-bisphosphate A [Homo sapiens (human)]
Official Symbol	ALDOA
Synonyms	ALDA; GSD12; HEL-S-87p

 Tel: 1-631-559-9269 1-516-512-3133

 Email: info@creative-biomart.com  Fax: 1-631-938-8127

 45-1 Ramsey Road, Shirley, NY 11967, USA

Gene ID	226
mRNA Refseq	NM_184043.2
Protein Refseq	NP_908932.1
MIM	103850
UniProt ID	P04075



Coomassie blue staining of purified ALDOA protein.

Tel: 1-631-559-9269 1-516-512-3133

Email: info@creative-biomart.com Fax: 1-631-938-8127

45-1 Ramsey Road, Shirley, NY 11967, USA