

Recombinant Human ALDOA Protein, GST-tagged

Cat. No. ALDOA-455H Lot. No. (See product label)

SPECIFICATION

Product Overview	Human ALDOA full-length ORF (AAH10660.1, 1 a.a. - 364 a.a.) recombinant protein with GST-tag at N-terminal.
Species	Human
Source	Wheat Germ
Description	<p>The protein encoded by this gene, Aldolase A (fructose-bisphosphate aldolase), is a glycolytic enzyme that catalyzes the reversible conversion of fructose-1,6-bisphosphate to glyceraldehyde 3-phosphate and dihydroxyacetone phosphate. Three aldolase isozymes (A, B, and C), encoded by three different genes, are differentially expressed during development. Aldolase A is found in the developing embryo and is produced in even greater amounts in adult muscle. Aldolase A expression is repressed in adult liver, kidney and intestine and similar to aldolase C levels in brain and other nervous tissue. Aldolase A deficiency has been associated with myopathy and hemolytic anemia. Alternative splicing and alternative promoter usage results in multiple transcript variants. Related pseudogenes have been identified on chromosomes 3 and 10. [provided by RefSeq, Aug 2011]</p>
Molecular Mass	65.78 kDa
AA Sequence	MPYQYPALTPEQKKELSDIAHRIVAPGKGILAADESTGSIKRLQSIGTENTEENRRF YRQLLLTADDRVNPCIGGVILFHETLYQKADDGRPFQVIKSKGGVVGKIKVDKGVVPL AGTNGETTTQGLDGLSERCAQYKKDGADFAKWRCVLKIGEHTPSALAIMENANVLA

 Tel: 1-631-559-9269 1-516-512-3133

 Email: info@creative-biomart.com  Fax: 1-631-938-8127

 45-1 Ramsey Road, Shirley, NY 11967, USA



RYASICQQNGIVPIVEPEILPDGDHDLKRCQYVTEKVLAAVYKALSDHHIYLEGTLKPNMVT
 PGGHACTQKFSHEEIAMATVTALRRTVPPAVTGITFLSGGQSEEEASINLNAINK
 CPLLPWALTFSYGRALQASALKAWGGKKENLKAAQEEYVKRALANSLACQGKYTP
 SGQAGAAASESLFVSNHAY

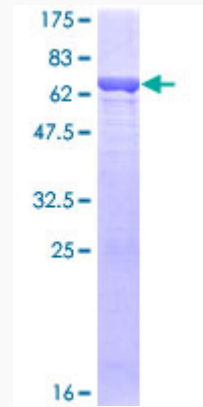
Applications	Enzyme-linked Immunoabsorbent Assay; Western Blot (Recombinant protein); Antibody Production; Protein Array
Notes	Best use within three months from the date of receipt of this protein.
Storage	Store at -80 centigrade. Aliquot to avoid repeated freezing and thawing.
Storage Buffer	50 mM Tris-HCl, 10 mM reduced Glutathione, pH=8.0 in the elution buffer.

GENE INFORMATION

Gene Name	ALDOA aldolase A, fructose-bisphosphate [Homo sapiens]
Official Symbol	ALDOA
Synonyms	ALDOA; aldolase A, fructose-bisphosphate; fructose-bisphosphate aldolase A; muscle-type aldolase; lung cancer antigen NY-LU-1; fructose-1,6-bisphosphate triosephosphate-lyase; ALDA; GSD12;
Gene ID	226
mRNA Refseq	NM_000034
Protein Refseq	NP_000025
MIM	103850

UniProt ID

P04075



12.5% SDS-PAGE Stained with Coomassie Blue.

 Tel: 1-631-559-9269 1-516-512-3133

 Email: info@creative-biomart.com  Fax: 1-631-938-8127

 45-1 Ramsey Road, Shirley, NY 11967, USA