

# Recombinant Human ALDOA Protein, Myc/DDK-tagged, C13 and N15-labeled

**Cat. No.** ALDOA-924H    **Lot. No.** (See product label)

## SPECIFICATION

<b>Product Overview</b>	ALDOA MS Standard C13 and N15-labeled recombinant protein (NP_000025) with a C-terminal MYC/DDK tag, was expressed in HEK293 cells.
<b>Species</b>	Human
<b>Source</b>	HEK293
<b>Description</b>	This gene encodes a member of the class I fructose-bisphosphate aldolase protein family. The encoded protein is a glycolytic enzyme that catalyzes the reversible conversion of fructose-1,6-bisphosphate to glyceraldehyde 3-phosphate and dihydroxyacetone phosphate. Three aldolase isozymes (A, B, and C), encoded by three different genes, are differentially expressed during development. Mutations in this gene have been associated with Glycogen Storage Disease XII, an autosomal recessive disorder associated with hemolytic anemia. Disruption of this gene also plays a role in the progression of multiple types of cancers. Related pseudogenes have been identified on chromosomes 3 and 10.
<b>Molecular Mass</b>	39.4 kDa
<b>AA Sequence</b>	MPYQYPALTPEQKKELSDIAHRIVAPGKGILAADESTGSIKRLQSIGTENTEENRRF YRQLLLTADDRVNPCIGGVILFHETLYQKADDGRPFQVIKSKGGVVGIVKVDKGVVPL AGTNGETTTQGLDGLSERCAQYKKGADFAKWRCVLKIGEHTPSALAIMENANVLA RYASICQQNGIVPIVEPEILPDGDHDLKRCQYVTEKVLAAVYKALSDHHIYLEGTLKLP

 Tel: 1-631-559-9269    1-516-512-3133

 Email: [info@creative-biomart.com](mailto:info@creative-biomart.com)     Fax: 1-631-938-8127

 45-1 Ramsey Road, Shirley, NY 11967, USA

NMVTPGHACTQKFSHEEIAMATVTALRRTVPPAVTGITFLSGGQSEEEASINLNAINK  
 CPLLKPWALTFSYGRALQASALKAWGGKKNLKAAQEEYVKRALANSLACQGKYTP  
 SGQAGAAASESLFVSNHAYTRTRPLEQKLISEEDLAANDILDYKDDDDKV

**Purity** > 80% as determined by SDS-PAGE and Coomassie blue staining

**Stability** Stable for 3 months from receipt of products under proper storage and handling conditions.

**Storage** Store at -80 centigrade. Avoid repeated freeze-thaw cycles.

**Concentration** 50 µg/mL as determined by BCA

**Storage Buffer** 100 mM glycine, 25 mM Tris-HCl, pH 7.3.

## GENE INFORMATION

**Gene Name** [ALDOA aldolase, fructose-bisphosphate A \[ Homo sapiens \(human\) \]](#)

**Official Symbol** [ALDOA](#)

**Synonyms** ALDOA; aldolase A, fructose-bisphosphate; fructose-bisphosphate aldolase A; muscle-type aldolase; lung cancer antigen NY-LU-1; fructose-1,6-bisphosphate triosephosphate-lyase; ALDA; GSD12;

**Gene ID** [226](#)

**mRNA Refseq** [NM\\_000034](#)

**Protein Refseq** [NP\\_000025](#)

 Tel: 1-631-559-9269 1-516-512-3133

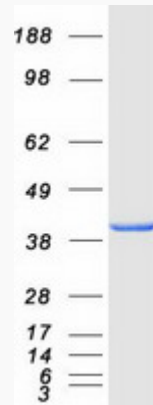
 Email: [info@creative-biomart.com](mailto:info@creative-biomart.com)  Fax: 1-631-938-8127

 45-1 Ramsey Road, Shirley, NY 11967, USA

**MIM** 103850

**UniProt ID** P04075

**SDS-PAGE**



 Tel: 1-631-559-9269 1-516-512-3133

 Email: [info@creative-biomart.com](mailto:info@creative-biomart.com)  Fax: 1-631-938-8127

 45-1 Ramsey Road, Shirley, NY 11967, USA