

# Recombinant Full Length Human ALDOC Protein

**Cat. No.** ALDOC-26498TH    **Lot. No.** (See product label)

## SPECIFICATION

<b>Product Overview</b>	Recombinant Full Length human ALDOC was expressed in E. coli and purified by using conventional chromatography techniques.
<b>Species</b>	Human
<b>Source</b>	E.coli
<b>ProteinLength</b>	1-364 aa
<b>Description</b>	ALDOC, also as known as fructose bisphosphate C, is a member of the class 1 fructose-biphosphate aldolase family. This protein is a ubiquitous enzyme that catalyzes the reversible aldol cleavage of fructose-bisphosphate and fructose 1-phosphate to dihydroxyacetone phosphate and either glycerol-dehyde-3-phosphate or glyceraldehyde, respectively. It is expressed specifically in the hippocampus and Purkinje cells of the brain.
<b>Form</b>	Liquid
<b>AASequence</b>	<p>MPHSYPALSAEQKKELSDIALRIVAPGKGILAADESVGSMARLSQIGVENTEENRRL            YRQVLFSADDRVKKCIGGVIFFHETLYQKDDNGVFPVRTIQDKGIVVGIKVDKGVVPL            AGTDGETTTQGLDGLSERCAQYKKGADFAKWRCVLKISERTPSALAIENANVLAR            YASICQQNGIVPIVEPEILPDGDHDLKRCQYVTEKVLAAVYKALSDHHVYLEGTLKLP            NMVTPGHACPIKYTPPEIAMATVTALRRTVPPAVPGVTFLSGGQSEEEASFNLNAIN            RCPLPRPWALTFSYGRALQASALNAWRGQRDNAGAATEEFIKRAEVNGLAAQGGKY            EGSGEDGGAAAQSLYIANHAY</p>

 Tel: 1-631-559-9269    1-516-512-3133

 Email: [info@creative-biomart.com](mailto:info@creative-biomart.com)     Fax: 1-631-938-8127

 45-1 Ramsey Road, Shirley, NY 11967, USA

<b>Molecular Mass</b>	39.4 kDa
<b>Purity</b>	> 90% by SDS-PAGE
<b>Application</b>	SDS-PAGE
<b>Note</b>	For research use only. This product is not intended or approved for human, diagnostics or veterinary use.
<b>Storage</b>	Can be stored at +2 to +8 centigrade for 1 week. For long term storage, aliquot and store at -20 to -80 centigrade. Avoid repeated freezing and thawing cycles.
<b>Storage Buffer</b>	20mM Tris-HCl buffer (pH 8.0) containing 20% glycerol, 2mM DTT, 0.1M NaCl
<b>Concentration</b>	1mg/ml (determined by Bradford assay)

## GENE INFORMATION

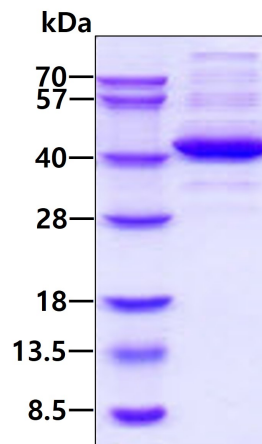
<b>Gene ID</b>	230
<b>Gene Name</b>	ALDOC aldolase C, fructose-bisphosphate [ Homo sapiens (human) ]
<b>Official Symbol</b>	230
<b>Synonyms</b>	ALDOC; aldolase C, fructose-bisphosphate; fructose-bisphosphate aldolase C; aldolase 3; fructoaldolase C; brain-type aldolase; fructose-1,6-biphosphate triosephosphate lyase; ALDC;
<b>mRNA Refseq</b>	NM_005165
<b>Official Symbol 2</b>	ALDOC

 Tel: 1-631-559-9269 1-516-512-3133

 Email: [info@creative-biomart.com](mailto:info@creative-biomart.com)  Fax: 1-631-938-8127

 45-1 Ramsey Road, Shirley, NY 11967, USA

<b>Gene ID 2</b>	230
<b>Gene Name 2</b>	ALDOC aldolase C, fructose-bisphosphate [ Homo sapiens (human) ]
<b>mRNA Refseq 2</b>	NM_005165
<b>Protein Refseq 2</b>	NP_005156
<b>MIM 2</b>	103870
<b>UniProt ID 2</b>	P09972

**SDS-PAGE**

3 µg by SDS-PAGE under reducing condition and visualized by coomassie blue stain.

 Tel: 1-631-559-9269 1-516-512-3133

 Email: [info@creative-biomart.com](mailto:info@creative-biomart.com)  Fax: 1-631-938-8127

 45-1 Ramsey Road, Shirley, NY 11967, USA