

Recombinant Human ALDOC Protein, GST-tagged

Cat. No. ALDOC-457H **Lot. No.** (See product label)

SPECIFICATION

Product Overview	Human ALDOC full-length ORF (AAH03613.1, 1 a.a. - 364 a.a.) recombinant protein with GST-tag at N-terminal.
Species	Human
Source	Wheat Germ
Description	This gene encodes a member of the class I fructose-biphosphate aldolase gene family. Expressed specifically in the hippocampus and Purkinje cells of the brain, the encoded protein is a glycolytic enzyme that catalyzes the reversible aldol cleavage of fructose-1,6-biphosphate and fructose 1-phosphate to dihydroxyacetone phosphate and either glyceraldehyde-3-phosphate or glyceraldehyde, respectively. [provided by RefSeq, Jul 2008]
Molecular Mass	65.67 kDa
AA Sequence	MPHSPALSAEQKKELSDIALRIVAPGKGGILAADSVGSMARLSQIGVENTEENRRL YRQVLFSADDRVKKCIGGVIFFHETLYQKDDNGVFPVRTIQDKGIVVGKVDKGVVPL AGTDGETTTQGLDGLSERCAQYKKGADFAKWRCVLKISERTPSALAIENANVLAR YASICQQNGIVPIVEPEILPDGDHDLKRCQYVTEKVLAAVYKALSDHHVYLEGTLKLP NMVTPGHACPIKYTPPEIAMATVTALRRTVPPAVPGVTFLSGGQSEEEASFNLNAIN RCPLPRPWALTFSYGRALQASALNAWRGQRDNAGAATEEFIKRAEVNGLAAQGGKY EGSGEDGGAAAQSLYIANHAY
Applications	Enzyme-linked Immunoabsorbent Assay; Western Blot (Recombinant protein);

 Tel: 1-631-559-9269 1-516-512-3133

 Email: info@creative-biomart.com  Fax: 1-631-938-8127

 45-1 Ramsey Road, Shirley, NY 11967, USA

Antibody Production; Protein Array

Notes	Best use within three months from the date of receipt of this protein.
Storage	Store at -80 centigrade. Aliquot to avoid repeated freezing and thawing.
Storage Buffer	50 mM Tris-HCl, 10 mM reduced Glutathione, pH=8.0 in the elution buffer.

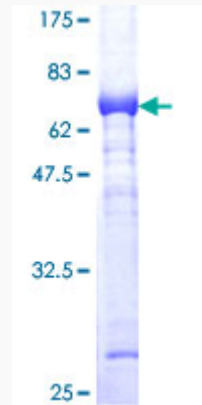
GENE INFORMATION

Gene Name	ALDOC aldolase C, fructose-bisphosphate [Homo sapiens]
Official Symbol	ALDOC
Synonyms	ALDOC; aldolase C, fructose-bisphosphate; fructose-bisphosphate aldolase C; aldolase 3; fructoaldolase C; brain-type aldolase; fructose-1,6-bisphosphate triosephosphate lyase; ALDC;
Gene ID	230
mRNA Refseq	NM_005165
Protein Refseq	NP_005156
MIM	103870
UniProt ID	P09972

 Tel: 1-631-559-9269 1-516-512-3133

 Email: info@creative-biomart.com  Fax: 1-631-938-8127

 45-1 Ramsey Road, Shirley, NY 11967, USA



12.5% SDS-PAGE Stained with Coomassie Blue.

Tel: 1-631-559-9269 1-516-512-3133

Email: info@creative-biomart.com Fax: 1-631-938-8127

45-1 Ramsey Road, Shirley, NY 11967, USA