

Recombinant Full Length Human ALDOC Protein, C-Flag-tagged

Cat. No. ALDOC-831HFL **Lot. No.** (See product label)

SPECIFICATION

| | |
|-------------------------|---|
| Product Overview | Recombinant Full Length Human ALDOC Protein, fused to Flag-tag at C-terminus, was expressed in Mammalian cells. |
| Species | Human |
| Source | Mammalian Cells |
| Description | This gene encodes a member of the class I fructose-biphosphate aldolase gene family. Expressed specifically in the hippocampus and Purkinje cells of the brain, the encoded protein is a glycolytic enzyme that catalyzes the reversible aldol cleavage of fructose-1,6-biphosphate and fructose 1-phosphate to dihydroxyacetone phosphate and either glyceraldehyde-3-phosphate or glyceraldehyde, respectively. |
| Form | 25 mM Tris HCl, pH 7.3, 100 mM glycine, 10% glycerol. |
| Molecular Mass | 39.3 kDa |
| AA Sequence | MPHSPALSAEQKKELSDIALRIVAPGKGILAADESVGSMARLSQIGVENTEENRRL YRQVLFSADDRV KKCIGGVIFFHETLYQKDDNGVPFVRTIQDKGIVVGIKVDKGVVPL AGTDGETTTQGLDGLSERCAQYKK DGADFAKWRCVLKISERTPSALAILENANVLA RYASICQQNGIVPIVEPEILPDGDHDLKRCQYVTEKVL AAVYKALSDHHVYLEGTLK PNMVTPGHACPIKYTPPEEIAMATVTALRRTVPPAVPGVTFSLGGQSEEEA SFNLNAI NRCPLRPWALTFSYGRALQASALNAWRGQRDNAGAATEEFIKRAEVNGLAAQ GK YEGSGEDG |

 Tel: 1-631-559-9269 1-516-512-3133

 Email: info@creative-biomart.com  Fax: 1-631-938-8127

 45-1 Ramsey Road, Shirley, NY 11967, USA

GAAAQSLYIANHAYTRTRPLEQKLISEEDLAANDILDYKDDDDKV

Purity > 80% as determined by SDS-PAGE and Coomassie blue staining.

Stability Stable for 12 months from the date of receipt of the product under proper storage and handling conditions. Avoid repeated freeze-thaw cycles.

Storage Store at -80 centigrade.

Concentration >50 ug/mL as determined by microplate BCA method.

Preparation Recombinant protein was captured through anti-DDK affinity column followed by conventional chromatography steps.

Protein Pathways Fructose and mannose metabolism, Glycolysis / Gluconeogenesis, Metabolic pathways, Pentose phosphate pathway

Full Length Full L.

GENE INFORMATION

Gene Name [ALDOC aldolase, fructose-bisphosphate C \[Homo sapiens \(human\) \]](#)

Official Symbol [ALDOC](#)

Synonyms [ALDC](#)

Gene ID [230](#)

mRNA Refseq [NM_005165.3](#)

 Tel: 1-631-559-9269 1-516-512-3133

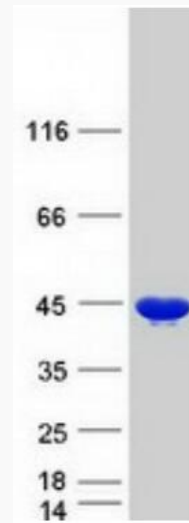
 Email: info@creative-biomart.com  Fax: 1-631-938-8127

 45-1 Ramsey Road, Shirley, NY 11967, USA

Protein Refseq NP_005156.1

MIM 103870

UniProt ID P09972



Coomassie blue staining of purified ALDOC protein.

 Tel: 1-631-559-9269 1-516-512-3133

 Email: info@creative-biomart.com  Fax: 1-631-938-8127

 45-1 Ramsey Road, Shirley, NY 11967, USA