

Recombinant Human Aldolase C, Fructose-Bisphosphate, His-tagged

Cat. No. ALDOC-969H Lot. No. (See product label)

SPECIFICATION

Product Overview	ALDOC protein, fused to His-tag at N-terminus, was expressed in E.coli and purified by using conventional chromatography techniques(1-364 aa).
Species	Human
Source	E.coli
ProteinLength	1-364 aa
Description	ALDOC, also known as aldolase C, is a member of the class I fructose-biphosphatealdolase family. This protein is a glycolytic enzyme that catalyzes the reversible aldol cleavage of fructose-1,6-biphosphate and fructose 1-phosphate to dihydroxyacetone phosphate and either glyceraldehyde-3-phosphate or glyceraldehydes respectively. It is expressed specifically in the hippocampus and Purkinje cells of the brain.
Form	Liquid. In 20mM Tris-HClbuffer(pH 8.0) containing 10% glycerol,2mM DTT, 0.1M NaCl.
Molecular Weight	41.6 kDa (384aa), confirmed by MALDI-TOF
Purity	> 95 % by SDS - PAGE
Concentration	1 mg/ml (determined by Bradford assay)

 Tel: 1-631-559-9269 1-516-512-3133

 Email: info@creative-biomart.com  Fax: 1-631-938-8127

 45-1 Ramsey Road, Shirley, NY 11967, USA

Sequences of amino acids

MGSSHHHHHH SSSLVPRGSH MPHSYPALSA EQKELSDIA LRIVAPGKGI
 LAADESVGSM AKRLSQIGVE NTEENRRLYR QVLFSADDRV KKCIGGVIFF
 HETLYQKDDN GVPFVRTIQD KGIVVGIVKVD KGVVPLAGTD GETTTQGLDG
 LSERCAQYKK DGADFAKWRC VLKISERTPS ALAILENANV LARYASICQQ
 NGIVPIVEPE ILPDGDHDLK RCQYVTEKVL AAVYKALSDH HVYLEGTLK
 PNMVTPGHAC PIKYTPPEIA MATVTALRRT VPPAVPGVTF LSGGQSEEEA
 SFNLNAINRC PLPRPWALTF SYGRALQASA LNAWRGQRDN AGAATEEFIK
 RAEVNGLAAQ GKYEGSGEDG GAAAQSLYIA NHAY

Storage

Can be stored at +4°C short term (1-2 weeks). For long term storage, aliquot and store at -20°C or -70°C. Avoid repeated freezing and thawing cycles.

GENE INFORMATION

Gene Name

[ALDOC aldolase C, fructose-bisphosphate \[Homo sapiens\]](#)

Synonyms

ALDOC; OTTHUMP00000163437;ALDC; fructoaldolase C;aldolaseC,fructose-bisphosphate; Brain-type aldolase; fructose-bisphosphatealdolase C; aldolase 3; EC 4.1.2.13; fructose-1,6-biphosphate triosephosphatylase

Gene ID

[230](#)

mRNA Refseq

[NM_005165](#)

Protein Refseq

[NP_005156](#)

MIM

[103870](#)

UniProt ID

[P09972](#)

Chromosome

17cen-q12

 Tel: 1-631-559-9269 1-516-512-3133

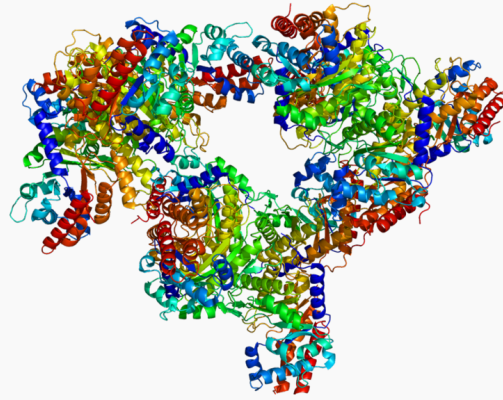
 Email: info@creative-biomart.com  Fax: 1-631-938-8127

 45-1 Ramsey Road, Shirley, NY 11967, USA

Location

Function

cytoskeletal protein binding; fructose-bisphosphatealdolase activity; lyase activity;
protein binding



 Tel: 1-631-559-9269 1-516-512-3133

 Email: info@creative-biomart.com  Fax: 1-631-938-8127

 45-1 Ramsey Road, Shirley, NY 11967, USA