

## Recombinant Human ALG1 protein, GST-tagged

Cat. No. ALG1-8654H Lot. No. (See product label)

### SPECIFICATION

**Product Overview** Recombinant Human ALG1 protein(157-464 aa), fused with N-terminal GST tag, was expressed in E. coli.

**Species** Human

**Source** E.coli

**ProteinLength** 157-464 aa

**Tag** N-GST

**Form** The purified protein was Lyophilized from sterile PBS (58mM Na<sub>2</sub>HPO<sub>4</sub>, 17mM NaH<sub>2</sub>PO<sub>4</sub>, 68mM NaCl, pH7.4). 5 % trehalose and 5 % mannitol are added as protectant before lyophilization.

**Purity** 85%, by SDS-PAGE with Coomassie Brilliant Blue staining.

**Storage** Short-term storage: Store at 2-8°C for (1-2 weeks). Long-term storage: Aliquot and store at -20°C to -80°C for up to 3 months, reconstitution with sterile water and addition of an equal volume of glycerol. Avoid repeat freeze-thaw cycles.

**Reconstitution** Reconstitute at 0.25 µg/µl in 200 µl sterile water for short-term storage. After reconstitution with sterile water, if glycerol has no effect on subsequent experiments, it is recommended to add an equal volume of glycerol for long-term storage.

 Tel: 1-631-559-9269 1-516-512-3133

 Email: [info@creative-biomart.com](mailto:info@creative-biomart.com)  Fax: 1-631-938-8127

 45-1 Ramsey Road, Shirley, NY 11967, USA

**AA Sequence**

HNYGYSIMGLVHGPNHPLVLLAKWYEKFFGRLSHLNLCVTNAMREDLADNWHIRAV  
 TVYDKPASFFKETPLDLQHRLFMKLGSMHSPFRARSEPEDPVTERSATERDAGSG  
 LVTRLRERPALLVSSTSWTEDEDFSIILAALEKFEQLTLDGHNLPVLCVITGKGPMR  
 EYYSRLIHQKHFQHIQVCTPWLEAEDYPLLLGSADLGVCLHTSSSGLDLPKVVDMF  
 GCCLPVCVAVNFKCLHELKHEENGLVFEDSEELAAQLQMLFSNFPDPAGKLNQFRK  
 NLRESQQLRWDESWVRTVLPVMDT

**GENE INFORMATION**

**Gene Name** [ALG1 asparagine-linked glycosylation 1, beta-1,4-mannosyltransferase homolog \(S. cerevisiae\)](#) [ [Homo sapiens](#) ]

**Official Symbol** [ALG1](#)

**Synonyms**

ALG1; asparagine-linked glycosylation 1, beta-1,4-mannosyltransferase homolog (S. cerevisiae); asparagine linked glycosylation 1 homolog (yeast, beta 1,4 mannosyltransferase); chitobiosyldiphosphodolichol beta-mannosyltransferase; HMAT1; HMT 1; mannosyltransferase-1; beta-1,4 mannosyltransferase; beta-1,4-mannosyltransferase; GDP-Man:GlcNAc2-PP-dolichol mannosyltransferase; asparagine-linked glycosylation protein 1 homolog; GDP-mannose-dolichol diphosphochitobiose mannosyltransferase; asparagine-linked glycosylation 1 homolog (yeast, beta-1,4-mannosyltransferase); HMT1; MT-1; CDG1K; HMT-1; Mat-1; hMat-1;

**Gene ID** [56052](#)

**mRNA Refseq** [NM\\_019109](#)

**Protein Refseq** [NP\\_061982](#)

**MIM** [605907](#)

 Tel: 1-631-559-9269 1-516-512-3133

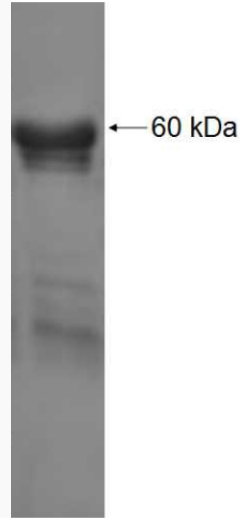
 Email: [info@creative-biomart.com](mailto:info@creative-biomart.com)  Fax: 1-631-938-8127

 45-1 Ramsey Road, Shirley, NY 11967, USA

UniProt ID

Q9BT22

SDS-PAGE



 Tel: 1-631-559-9269 1-516-512-3133

 Email: [info@creative-biomart.com](mailto:info@creative-biomart.com)  Fax: 1-631-938-8127

 45-1 Ramsey Road, Shirley, NY 11967, USA