

Recombinant Human ALG10 Protein, GST-tagged

Cat. No. ALG10-460H **Lot. No.** (See product label)

SPECIFICATION

Product Overview	Human ALG10 partial ORF (NP_116223, 48 a.a. - 97 a.a.) recombinant protein with GST-tag at N-terminal.
Species	Human
Source	Wheat Germ
Description	This gene encodes a membrane-associated protein that adds the third glucose residue to the lipid-linked oligosaccharide precursor for N-linked glycosylation. That is, it transfers the terminal glucose from dolichyl phosphate glucose (Dol-P-Glc) onto the lipid-linked oligosaccharide Glc2Man9GlcNAc(2)-PP-Dol. The rat protein homolog was shown to specifically modulate the gating function of the rat neuronal ether-a-go-go (EAG) potassium ion channel. [provided by RefSeq, Jan 2010]
Molecular Mass	31.24 kDa
AA Sequence	KLTEAWKTELQKKEDRLPPIKGPFAEFRKILQFLLAYSMSFKNLSMLLLL
Applications	Enzyme-linked Immunoabsorbent Assay; Western Blot (Recombinant protein); Antibody Production; Protein Array
Notes	Best use within three months from the date of receipt of this protein.
Storage	Store at -80 centigrade. Aliquot to avoid repeated freezing and thawing.

 Tel: 1-631-559-9269 1-516-512-3133

 Email: info@creative-biomart.com  Fax: 1-631-938-8127

 45-1 Ramsey Road, Shirley, NY 11967, USA

Storage Buffer 50 mM Tris-HCl, 10 mM reduced Glutathione, pH=8.0 in the elution buffer.

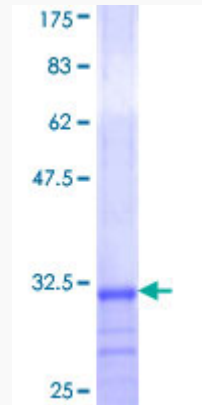
GENE INFORMATION

Gene Name	ALG10 asparagine-linked glycosylation 10, alpha-1,2-glycosyltransferase homolog (S. pombe) [Homo sapiens]
Official Symbol	ALG10
Synonyms	ALG10; asparagine-linked glycosylation 10, alpha-1,2-glycosyltransferase homolog (S. pombe); asparagine linked glycosylation 10, alpha 1,2 glycosyltransferase homolog (yeast); dol-P-Glc:Glc(2)Man(9)GlcNAc(2)-PP-Dol alpha-1,2-glycosyltransferase; derepression of ITR1 expression 2 homolog (S. cerevisiae); DIE2; FLJ14751; alpha2-glycosyltransferase; potassium channel regulator 1; alpha-2-glycosyltransferase ALG10-A; alpha-1,2-glycosyltransferase ALG10-A; derepression of ITR1 expression 2 homolog; asparagine-linked glycosylation protein 10 homolog A; asparagine-linked glycosylation 10 homolog (yeast, alpha-1,2-glycosyltransferase); KCR1;
Gene ID	84920
mRNA Refseq	NM_032834
Protein Refseq	NP_116223
MIM	603313
UniProt ID	Q5BKT4

 Tel: 1-631-559-9269 1-516-512-3133

 Email: info@creative-biomart.com  Fax: 1-631-938-8127

 45-1 Ramsey Road, Shirley, NY 11967, USA



12.5% SDS-PAGE Stained with Coomassie Blue.

 Tel: 1-631-559-9269 1-516-512-3133

 Email: info@creative-biomart.com  Fax: 1-631-938-8127

 45-1 Ramsey Road, Shirley, NY 11967, USA