

Recombinant Human ALG2 Protein, Myc/DDK-tagged, C13 and N15-labeled

Cat. No. ALG2-6198H **Lot. No.** (See product label)

SPECIFICATION

Product Overview	ALG2 MS Standard C13 and N15-labeled recombinant protein (NP_149078) with a C-terminal MYC/DDK tag, was expressed in HEK293 cells.
Species	Human
Source	HEK293
Description	This gene encodes a member of the glycosyltransferase 1 family. The encoded protein acts as an alpha 1,3 mannosyltransferase, mannosylating Man(2)GlcNAc(2)-dolichol diphosphate and Man(1)GlcNAc(2)-dolichol diphosphate to form Man(3)GlcNAc(2)-dolichol diphosphate. Defects in this gene have been associated with congenital disorder of glycosylation type 1h (CDG-1h). Alternative splicing results in multiple transcript variants.
Molecular Mass	47.1 kDa
AA Sequence	MAEEQGRERDSVPKPSVFLHPDLGVGGAERLVLDAALALQARGCSVKIWTAHYDP GHCFAESRELPVRCAGDWLPRGLGWGGRGAAVCAYVRMVFLALYVFLADEEFDV VVCDQVSACIPVFRRLARRRKKILFYCHFPDLLLTKRDSFLKRLYRAPIDWIEEYTTGM ADCILVNSQFTAAVFKETFKSLSHIDPDVLYPSLNVTSFDSVVPEKLDDLVPKGKKFLL LSINRYERKKNLTLALEALVQLRGRLLTSQDWERVHLIVAGGYDERVLENVEHYQELK KMVQQSDLGQYVTFRLRSFSDKQKISLLHSCTCVLYTPSNEHFGIVPLEAMYMQCPVI AVNSGGPLESIDHSVTGFLCEPDPVHFSEAIEKFIREPSLKATMGLAGRARVKEKFSP

 Tel: 1-631-559-9269 1-516-512-3133

 Email: info@creative-biomart.com  Fax: 1-631-938-8127

 45-1 Ramsey Road, Shirley, NY 11967, USA

EAFTEQLYRYVTKLLVTRTRPLEQKLISEEDLAANDILDYKDDDDKV

Purity > 80% as determined by SDS-PAGE and Coomassie blue staining

Stability Stable for 3 months from receipt of products under proper storage and handling conditions.

Storage Store at -80 centigrade. Avoid repeated freeze-thaw cycles.

Concentration 50 µg/mL as determined by BCA

Storage Buffer 100 mM glycine, 25 mM Tris-HCl, pH 7.3.

GENE INFORMATION

Gene Name [ALG2](#) [ALG2 alpha-1,3/1,6-mannosyltransferase \[Homo sapiens \(human\) \]](#)

Official Symbol [ALG2](#)

Synonyms

ALG2; asparagine-linked glycosylation 2, alpha-1,3-mannosyltransferase homolog (S. cerevisiae); asparagine linked glycosylation 2 homolog (yeast, alpha 1,3 mannosyltransferase); alpha-1,3/1,6-mannosyltransferase ALG2; CDGII; FLJ14511; hALPG2; NET38; homolog of yeast ALG2; alpha-1,3-mannosyltransferase ALG2; asparagine-linked glycosylation protein 2 homolog; GDP-Man:Man(1)GlcNAc(2)-PP-dolichol mannosyltransferase; GDP-Man:Man(1)GlcNAc(2)-PP-Dol alpha-1,3-mannosyltransferase; GDP-Man:Man(2)GlcNAc(2)-PP-Dol alpha-1,6-mannosyltransferase; asparagine-linked glycosylation 2 homolog (yeast, alpha-1,3-mannosyltransferase); asparagine-linked glycosylation 2 homolog (S. cerevisiae, alpha-1,3-mannosyltransferase);

Gene ID [85365](#)

 Tel: 1-631-559-9269 1-516-512-3133

 Email: info@creative-biomart.com  Fax: 1-631-938-8127

 45-1 Ramsey Road, Shirley, NY 11967, USA

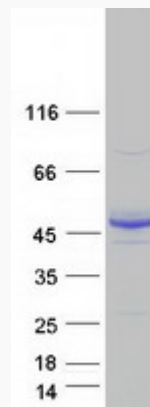
mRNA Refseq [NM_033087](#)

Protein Refseq [NP_149078](#)

MIM [607905](#)

UniProt ID [Q9H553](#)

SDS-PAGE



 Tel: 1-631-559-9269 1-516-512-3133

 Email: info@creative-biomart.com  Fax: 1-631-938-8127

 45-1 Ramsey Road, Shirley, NY 11967, USA