

Recombinant Human ALG3 Protein, GST-tagged

Cat. No. ALG3-464H Lot. No. (See product label)

SPECIFICATION

Product Overview	Human ALG3 full-length ORF (NP_005778.1, 1 a.a. - 438 a.a.) recombinant protein with GST-tag at N-terminal.
Species	Human
Source	Wheat Germ
Description	This gene encodes a member of the ALG3 family. The encoded protein catalyses the addition of the first dol-P-Man derived mannose in an alpha 1,3 linkage to Man5GlcNAc2-PP-Dol. Defects in this gene have been associated with congenital disorder of glycosylation type Id (CDG-Id) characterized by abnormal N-glycosylation. Multiple transcript variants encoding different isoforms have been found for this gene. [provided by RefSeq, Nov 2008]
Molecular Mass	76.5 kDa
AA Sequence	<p>MAAGLRKRGRSGSAAQAEG LCKQWLQRAWQERRLLLREPRYTLLVAACLCLAEVGI ITFWVIHRVAYTEIDWKAYMAEVEGVINGTYDYTQLQGDTGPLVYPAGFVYIFMGLY YATSRGTDIRMAQNIFAVLYLATLLLFLIYHQTCKVPPFVFFMCCASYRVHSIFVLR LFNDPVAMVLLFLSINLLAQRWGWGCCFFSLAVSVKMNVLFPAGLLFLLLTQFGF RGALPKLGICAGLQVVLGLPFLENPSGYLSRSFDLGRQFLFHWTVNWRFLPEALFL HRAFHLALLTAHLTLLLFALCRWHRTGESILSLLRDPSKRKVPPQPLTPNQIVSTLFT SNFIGICFSRSLHYQFYVWYFHTLPYLLWAMPARWLTHLLRLLVLGLIELSWNTYPST SCSSAALHICHAVILLQLWLGPQPFKSTQHSKKAH</p>

 Tel: 1-631-559-9269 1-516-512-3133

 Email: info@creative-biomart.com  Fax: 1-631-938-8127

 45-1 Ramsey Road, Shirley, NY 11967, USA

Applications	Enzyme-linked Immunoabsorbent Assay; Western Blot (Recombinant protein); Antibody Production; Protein Array
Notes	Best use within three months from the date of receipt of this protein.
Storage	Store at -80 centigrade. Aliquot to avoid repeated freezing and thawing.
Storage Buffer	50 mM Tris-HCl, 10 mM reduced Glutathione, pH=8.0 in the elution buffer.
GENE INFORMATION	
Gene Name	ALG3 ALG3, alpha-1,3- mannosyltransferase [Homo sapiens (human)]
Official Symbol	ALG3
Synonyms	ALG3; ALG3, alpha-1,3- mannosyltransferase; not; CDG1D; CDGS4; CDGS6; Not56; NOT56L; D16Ertd36e; dol-P-Man:Man(5)GlcNAc(2)-PP-Dol alpha-1,3- mannosyltransferase; Not56-like protein; asparagine-linked glycosylation 3 homolog (S. cerevisiae, alpha-1,3-mannosyltransferase); asparagine-linked glycosylation 3 homolog (yeast, alpha-1,3-mannosyltransferase); asparagine-linked glycosylation 3, alpha-1,3- mannosyltransferase homolog; asparagine-linked glycosylation protein 3 homolog; carbohydrate deficient glycoprotein syndrome type IV; dol-P-Man-dependent alpha(1-3)-mannosyltransferase; dolichyl-P-Man:Man(5)GlcNAc(2)-PP-dolichyl mannosyltransferase; dolichyl-phosphate-mannose--glycolipid alpha-mannosyltransferase; EC 2.4.1.258
Gene ID	10195
mRNA Refseq	NM_001006941
Protein Refseq	NP_001006942

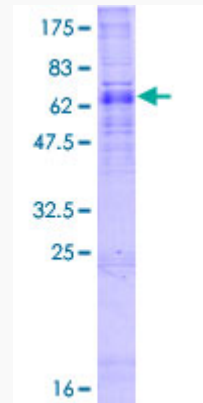
 Tel: 1-631-559-9269 1-516-512-3133

 Email: info@creative-biomart.com  Fax: 1-631-938-8127

 45-1 Ramsey Road, Shirley, NY 11967, USA

MIM 608750

UniProt ID Q92685



12.5% SDS-PAGE Stained with Coomassie Blue.

Tel: 1-631-559-9269 1-516-512-3133

Email: info@creative-biomart.com Fax: 1-631-938-8127

45-1 Ramsey Road, Shirley, NY 11967, USA