

## Recombinant Human ALG5 Protein, GST-tagged

**Cat. No.** ALG5-465H    **Lot. No.** (See product label)

### SPECIFICATION

<b>Product Overview</b>	Human ALG5 full-length ORF ( AAH12531, 1 a.a. - 324 a.a.) recombinant protein with GST-tag at N-terminal.
<b>Species</b>	Human
<b>Source</b>	Wheat Germ
<b>Description</b>	This gene encodes a member of the glycosyltransferase 2 family. The encoded protein participates in glucosylation of the oligomannose core in N-linked glycosylation of proteins. The addition of glucose residues to the oligomannose core is necessary to ensure substrate recognition, and therefore, effectual transfer of the oligomannose core to the nascent glycoproteins. Multiple transcript variants encoding different isoforms have been found for this gene. [provided by RefSeq, Nov 2008]
<b>Molecular Mass</b>	61.38 kDa
<b>AA Sequence</b>	MAPLLLQLAVLGAALAAAALVLISIVAF TTATKMPALHRHEEEKFFLNAGQKETLPSI WDSPTKQLSVVVPSYNEEKRLPVMMDEALSYLEKRQKRDP AFTYEIVVDDGSKDQ TSKVAFKYCQKYGSDKVRVITLVKNRGKGGAIRMGIFSSRGEKILMADADGATKFPD VEKLEKGLNDLQPWPNQMAIACGSRAHLEKESIAQRSYFR TLLMYGFHFLVWFLCV KGIRDTCGFKLFTREAA SRTFSSLHVERWAFDVELLYIAQFFKIPIAEI AVNWTEIEG SKLVPFWSWLQMGKDLLFIRLRYLTGAWRLEQTRKMN
<b>Applications</b>	Enzyme-linked Immunoabsorbent Assay; Western Blot (Recombinant protein); Antibody Production; Protein Array

 Tel: 1-631-559-9269    1-516-512-3133

 Email: [info@creative-biomart.com](mailto:info@creative-biomart.com)     Fax: 1-631-938-8127

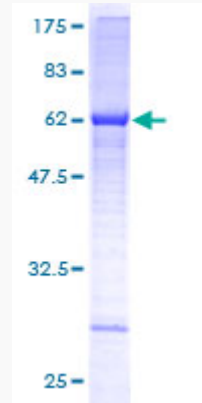
 45-1 Ramsey Road, Shirley, NY 11967, USA

<b>Notes</b>	Best use within three months from the date of receipt of this protein.
<b>Storage</b>	Store at -80 centigrade. Aliquot to avoid repeated freezing and thawing.
<b>Storage Buffer</b>	50 mM Tris-HCl, 10 mM reduced Glutathione, pH=8.0 in the elution buffer.
<b>GENE INFORMATION</b>	
<b>Gene Name</b>	ALG5 asparagine-linked glycosylation 5, dolichyl-phosphate beta-glucosyltransferase homolog ( <i>S. cerevisiae</i> ) [ <i>Homo sapiens</i> ]
<b>Official Symbol</b>	ALG5
<b>Synonyms</b>	ALG5; asparagine-linked glycosylation 5, dolichyl-phosphate beta-glucosyltransferase homolog ( <i>S. cerevisiae</i> ); asparagine linked glycosylation 5 homolog (yeast, dolichyl phosphate beta glucosyltransferase); dolichyl-phosphate beta-glucosyltransferase; bA421P11.2; doIP-glucosyltransferase; Alg5, <i>S. cerevisiae</i> , homolog of; dolichyl phosphate glucosyltransferase; asparagine-linked glycosylation protein 5 homolog; asparagine-linked glycosylation 5 homolog (yeast, dolichyl-phosphate beta-glucosyltransferase); asparagine-linked glycosylation 5 homolog ( <i>S. cerevisiae</i> , dolichyl-phosphate beta-glucosyltransferase); RP11-421P11.2;
<b>Gene ID</b>	29880
<b>mRNA Refseq</b>	NM_001142364
<b>Protein Refseq</b>	NP_001135836
<b>MIM</b>	604565
<b>UniProt ID</b>	Q9Y673

 Tel: 1-631-559-9269 1-516-512-3133

 Email: [info@creative-biomart.com](mailto:info@creative-biomart.com)  Fax: 1-631-938-8127

 45-1 Ramsey Road, Shirley, NY 11967, USA



12.5% SDS-PAGE Stained with Coomassie Blue.

 Tel: 1-631-559-9269 1-516-512-3133

 Email: [info@creative-biomart.com](mailto:info@creative-biomart.com)  Fax: 1-631-938-8127

 45-1 Ramsey Road, Shirley, NY 11967, USA