

## Recombinant Human ALK protein, His-tagged

Cat. No. ALK-26H Lot. No. (See product label)

### SPECIFICATION

<b>Product Overview</b>	Recombinant Human ALK protein (Met1348-Ser1611) was fused to His-tag at the N-terminus and expressed in E.coli.
<b>Species</b>	Human
<b>Source</b>	E.coli
<b>ProteinLength</b>	Met1348-Ser1611
<b>Form</b>	Freeze-dried powder. 20mM Tris, 150mM NaCl, pH8.0, containing 1mM EDTA, 1mM DTT, 0.01% SKL, 5% Trehalose and Proclin300.
<b>Molecular Mass</b>	Predicted Molecular Mass: 32.6 kDa; Accurate Molecular Mass: 36 kDa
<b>Endotoxin</b>	<1.0 EU per 1g (determined by the LAL method)
<b>Purity</b>	> 90%
<b>Applications</b>	Positive Control; Immunogen; SDS-PAGE; WB.
<b>Stability</b>	The thermal stability is described by the loss rate. The loss rate was determined by accelerated thermal degradation test, that is, incubate the protein at 37 centigrade for 48h, and no obvious degradation and precipitation were observed. The loss rate is less than 5% within the expiration date under appropriate storage condition.

 Tel: 1-631-559-9269 1-516-512-3133

 Email: [info@creative-biomart.com](mailto:info@creative-biomart.com)  Fax: 1-631-938-8127

 45-1 Ramsey Road, Shirley, NY 11967, USA

**Storage** Avoid repeated freeze/thaw cycles. Store at 2-8 centigrade for one month. Aliquot and store at -80 centigrade for 12 months.

**Reconstitution** Reconstitute in 20 mM Tris, 150 mM NaCl (pH8.0) to a concentration of 0.1-1.0 mg/mL. Do not vortex.

## GENE INFORMATION

**Gene Name** ALK

**Official Symbol** ALK

**Synonyms** CD246; NBLST3

**Gene ID** 238

**mRNA Refseq** NM\_004304.5

**Protein Refseq** NP\_004295.2

**MIM** 105590

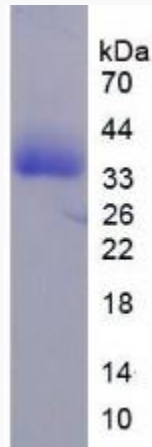
**UniProt ID** Q9UM73

 Tel: 1-631-559-9269 1-516-512-3133

 Email: [info@creative-biomart.com](mailto:info@creative-biomart.com)  Fax: 1-631-938-8127

 45-1 Ramsey Road, Shirley, NY 11967, USA

**SDS-PAGE of ALK-26H**



 Tel: 1-631-559-9269 1-516-512-3133

 Email: [info@creative-biomart.com](mailto:info@creative-biomart.com)  Fax: 1-631-938-8127

 45-1 Ramsey Road, Shirley, NY 11967, USA