

# Recombinant Human ALLC Protein, Myc/DDK-tagged, C13 and N15-labeled

**Cat. No.** ALLC-4947H    **Lot. No.** (See product label)

## SPECIFICATION

<b>Product Overview</b>	ALLC MS Standard C13 and N15-labeled recombinant protein (NP_060906) with a C-terminal MYC/DDK tag, was expressed in HEK293 cells.
<b>Species</b>	Human
<b>Source</b>	HEK293
<b>Description</b>	Allantoicase (EC 3.5.3.4) participates in the uric acid degradation pathway. Its enzymatic activity, like that of urate oxidase, was lost during vertebrate evolution.
<b>Molecular Mass</b>	43.4 kDa
<b>AA Sequence</b>	MDMASESVGGKILFATDDFFAPAENLIKSDSPCFKEHEYTEFGKWMDGWETRRKRI PGHDWCVLRLGIQGVIRGFDVDVSYFTGDYAPRVSIQAANLEEDKLPEIPERGTRTG AAATPEEFEAIAELKSDDWSYLVPMTELKPGNPASGHNYFLVNSQQRWTHIRLNIFP DGGIARLRVFGTGQKDWTATDPKEPADLVAIAFGGVCVGFSSNAKFGHPNNIIGVGG AKSMADGWETARRLDRPPILENDENGILLVPGCEWAVFRLAHPGVITRIEIDTKYFEG NAPDSCKVDGCILTTQEEEAVIRQKWILPAHKWKPLLPVTKLSPNQSHLFDLSLTLELQ DVITHARLTIVPDGGVSRLRLRGFPSSICLLRPREKPKLKFVSFSKANPTRTRPLEQK LISEEDLAANDILDYKDDDDKV
<b>Purity</b>	> 80% as determined by SDS-PAGE and Coomassie blue staining
<b>Stability</b>	Stable for 3 months from receipt of products under proper storage and handling

 Tel: 1-631-559-9269    1-516-512-3133

 Email: [info@creative-biomart.com](mailto:info@creative-biomart.com)     Fax: 1-631-938-8127

 45-1 Ramsey Road, Shirley, NY 11967, USA

conditions.

**Storage** Store at -80 centigrade. Avoid repeated freeze-thaw cycles.

**Concentration** 50 µg/mL as determined by BCA

**Storage Buffer** 100 mM glycine, 25 mM Tris-HCl, pH 7.3.

## GENE INFORMATION

**Gene Name** ALLC allantoicase [ Homo sapiens (human) ]

**Official Symbol** ALLC

**Synonyms** allantoicase; ALC; Allantoate amidinohydrolase; EC 3.5.3.4; probable allantoicase; OTTHUMP00000200095

**Gene ID** 55821

**mRNA Refseq** NM\_018436

**Protein Refseq** NP\_060906

**MIM** 612396

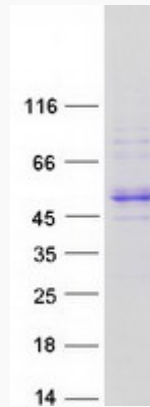
**UniProt ID** Q8N6M5

 Tel: 1-631-559-9269 1-516-512-3133

 Email: [info@creative-biomart.com](mailto:info@creative-biomart.com)  Fax: 1-631-938-8127

 45-1 Ramsey Road, Shirley, NY 11967, USA

**SDS-PAGE**



 Tel: 1-631-559-9269 1-516-512-3133

 Email: [info@creative-biomart.com](mailto:info@creative-biomart.com)  Fax: 1-631-938-8127

 45-1 Ramsey Road, Shirley, NY 11967, USA