

Recombinant Human ALOX12 Protein

Cat. No. ALOX12-01H Lot. No. (See product label)

SPECIFICATION

Product Overview	Recombinant Human ALOX12 protein without tag was expressed in E. coli.
Species	Human
Source	E.coli
Description	<p>This gene encodes a member of the lipoxygenase family of proteins. The encoded enzyme acts on different polyunsaturated fatty acid substrates to generate bioactive lipid mediators including eicosanoids and lipoxins. The encoded enzyme and its reaction products have been shown to regulate platelet function. Elevated expression of this gene has been observed in pancreatic islets derived from human diabetes patients. Allelic variants in this gene may be associated with susceptibility to toxoplasmosis. Multiple pseudogenes of this gene have been identified in the human genome.</p>
Molecular Mass	~ 70 kDa
Purity	> 95% by SDS-PAGE
Storage	Store it at +4 centigrade for short term. For long term storage, store it at -20 to -80 centigrade.
Storage Buffer	50mM Tris-HCl, 100mM NaCl, pH 8.0, 20% Glycerol.

GENE INFORMATION

 Tel: 1-631-559-9269 1-516-512-3133

 Email: info@creative-biomart.com  Fax: 1-631-938-8127

 45-1 Ramsey Road, Shirley, NY 11967, USA

Gene Name	ALOX12 arachidonate 12-lipoxygenase, 12S type [Homo sapiens (human)]
Official Symbol	ALOX12
Synonyms	ALOX12; arachidonate 12-lipoxygenase, 12S type; LOG12; 12-LOX; 12S-LOX; polyunsaturated fatty acid lipoxygenase ALOX12; 12S-lipoxygenase; Arachidonate 12-lipoxygenase, 12S-type; arachidonate (12S)-lipoxygenase; arachidonate (15S)-lipoxygenase; arachidonate 15-lipoxygenase, 15S-type; linoleate 13S-lipoxygenase; lipoxin synthase 12-LO; platelet 12-LOX; platelet-type 12-lipoxygenase; platelet-type lipoxygenase 12; EC 1.13.11.31; EC 1.13.11.33
Gene ID	239
mRNA Refseq	NM_000697
Protein Refseq	NP_000688
MIM	152391
UniProt ID	O95569

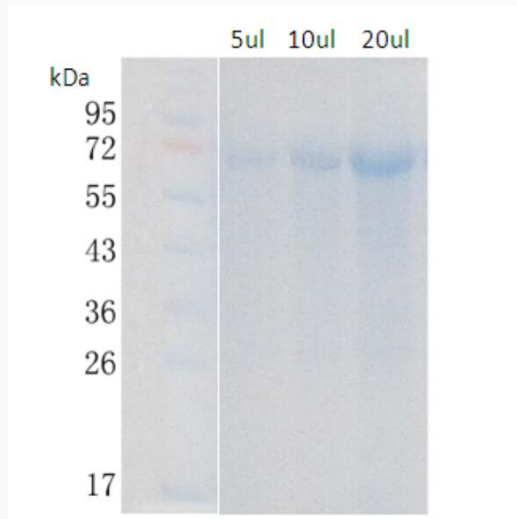
 Tel: 1-631-559-9269 1-516-512-3133

 Email: info@creative-biomart.com  Fax: 1-631-938-8127

 45-1 Ramsey Road, Shirley, NY 11967, USA



SDS-PAGE



Tel: 1-631-559-9269 1-516-512-3133

Email: info@creative-biomart.com Fax: 1-631-938-8127

45-1 Ramsey Road, Shirley, NY 11967, USA