

Recombinant Full Length Human ALOX12 Protein, C-Flag-tagged

Cat. No. ALOX12-1478HFL **Lot. No.** (See product label)

SPECIFICATION

Product Overview	Recombinant Full Length Human ALOX12 Protein, fused to Flag-tag at C-terminus, was expressed in Mammalian cells.
Species	Human
Source	Mammalian Cells
Description	This gene encodes a member of the lipoxygenase family of proteins. The encoded enzyme acts on different polyunsaturated fatty acid substrates to generate bioactive lipid mediators including eicosanoids and lipoxins. The encoded enzyme and its reaction products have been shown to regulate platelet function. Elevated expression of this gene has been observed in pancreatic islets derived from human diabetes patients. Allelic variants in this gene may be associated with susceptibility to toxoplasmosis. Multiple pseudogenes of this gene have been identified in the human genome.
Form	25 mM Tris HCl, pH 7.3, 100 mM glycine, 10% glycerol.
Molecular Mass	75.5 kDa
AA Sequence	MGRYRIRVATGAWLFSGSYNRVQLWLVGTRGEAELELQLRPARGEEEEFDHDAE DLGLLQFVRLRKHHW LVDDAWFCDRITVQGGACAEVAFPCYRWWQGEDILSLPE GTARLPGDNALDMFQKHREKELKDRQQIYC WATWKEGLPLTIAADRKDDLPPNMR FHEEKRLDFEWTLKAGALEMALKRVYTLSSWNCLEDFDQIFWGQ KSALAEKVRQ

 Tel: 1-631-559-9269 1-516-512-3133

 Email: info@creative-biomart.com  Fax: 1-631-938-8127

 45-1 Ramsey Road, Shirley, NY 11967, USA



CWQDDELFSYQFLNGANPMLLRRSTSLPSRLVLPSPGMEELRAQLEKELQNGSLFEA
DFIL LDGIPANVIRGEKQYLAAPLVMLKMEPNGKLQPMVIQIPPNPSSPTPTLFLPS
DPPLAWLLAKSWVRNS DFQLHEIQYHLLNTHLVAEVIAVATMRCLPGLHPIFKFLIPHI
RYTMEINTRARTQLISDGGIFDKAVST GGGGHVQLLRRAAAQLTYCSLCPDDLAD
RGLLGLPGALYAHDALRLWEIARYVEGIVHLFYQRDDIVK GDPELQAWCREITEVGL
CQAQDRGFVVSFQSQSQLCHFLTMCVFTCTAQHAAINQGQLDWAYVVPNAPCT M
RMPPPTTKEDVTMATVMGSLPDVRQACLQMAISWHLSTRRQPDMVPLGHHKEYFS
GPKPKAVLNQFRTD
LEKLEKEITARNEQLDWPYEYLPKPSCIENSVTISGPTRTRRLEQKLISEEDLAANDILD
YKDDDDKV

Purity	> 80% as determined by SDS-PAGE and Coomassie blue staining.
Stability	Stable for 12 months from the date of receipt of the product under proper storage and handling conditions. Avoid repeated freeze-thaw cycles.
Storage	Store at -80 centigrade.
Concentration	>50 ug/mL as determined by microplate BCA method.
Preparation	Recombinant protein was captured through anti-DDK affinity column followed by conventional chromatography steps.
Protein Families	Druggable Genome
Protein Pathways	Arachidonic acid metabolism, Metabolic pathways
Full Length	Full L.

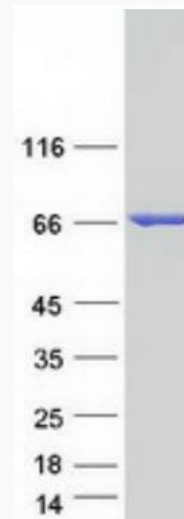
GENE INFORMATION

Tel: 1-631-559-9269 1-516-512-3133

Email: info@creative-biomart.com Fax: 1-631-938-8127

45-1 Ramsey Road, Shirley, NY 11967, USA

Gene Name	ALOX12 arachidonate 12-lipoxygenase, 12S type [Homo sapiens (human)]
Official Symbol	ALOX12
Synonyms	LOG12; 12-LOX; 12S-LOX
Gene ID	239
mRNA Refseq	NM_000697.3
Protein Refseq	NP_000688.2
MIM	152391
UniProt ID	P18054



Coomassie blue staining of purified ALOX12 protein.

 Tel: 1-631-559-9269 1-516-512-3133

 Email: info@creative-biomart.com  Fax: 1-631-938-8127

 45-1 Ramsey Road, Shirley, NY 11967, USA