

Recombinant Human ALOX12 Protein, GST-tagged

Cat. No. ALOX12-482H Lot. No. (See product label)

SPECIFICATION

Product Overview	Human ALOX12 full-length ORF (NP_000688.1, 1 a.a. - 663 a.a.) recombinant protein with GST-tag at N-terminal.
Species	Human
Source	Wheat Germ
Description	ALOX12 (Arachidonate 12-Lipoxygenase, 12S Type) is a Protein Coding gene. Diseases associated with ALOX12 include Inflammatory Bowel Disease 12 and Colorectal Cancer 12. Among its related pathways are Arachidonic acid metabolism and HETE and HPETE biosynthesis and metabolism. GO annotations related to this gene include iron ion binding and arachidonate 12-lipoxygenase activity. An important paralog of this gene is ALOX15.
Molecular Mass	102.1 kDa
AA Sequence	<p>MGRYRIRVATGAWLFGSGSYNRVQLWLVGTRGEAELELQLRPARGEEEEFDHDVAE DLGLLQFVRLRKHHWLVDDAWFCDRITVQGPACAEVAFPCYRWVQGEDILSLPE GTARLPGDNALDMFQKHREKELKDRQQIYCWATWKEGLPLTIAADRKDDLPPNMRF HEEKRLDFEWTLKAGALEMALKRVYTLSSWNCLEDFDQIFWGQKSALAEKVRQC WQDDELFSYQFLNGANPMLLRRSTSLPSRLVLPSPGMEELRAQLEKELQNGSLFEAD FILLDGIPANVIRGEKQYLAAPLVMLKMEPNGKLQPMVIQIQQPNPSSPTPTLFLPSDP PLAWLLAKSWVRNSDFQLHEIQYHLLNTHLVAEVIAVATMRCLPGLHPHIFKFLPHIRY TMEINTRARTQLISDGGIFDKAVSTGGGGHVQLLRRAAAQLTYCSLCPDDLADRGL</p>

 Tel: 1-631-559-9269 1-516-512-3133

 Email: info@creative-biomart.com  Fax: 1-631-938-8127

 45-1 Ramsey Road, Shirley, NY 11967, USA

LGLPGALYAHDALRLWEIARYVEGIVHLFYQRDDIVKGDPELQAWCREITEVGLCQA
 QDRGFPVVSFQSQSQLCHFLTMCVFTCTAQHAAINQGQLDWYAWVPNAPCTMRMP
 PPTTKEDVTMATVMGSLPDVRQACLQMAISWHLSTRRPDMVPLGHHKEKYFSGPK
 PKAVLNQFRDLEKLEKEITARNEQLDWPYEYLPKPSCIENSVTI

Applications Enzyme-linked Immunoabsorbent Assay; Western Blot (Recombinant protein);
 Antibody Production; Protein Array

Notes Best use within three months from the date of receipt of this protein.

Storage Store at -80 centigrade. Aliquot to avoid repeated freezing and thawing.

Storage Buffer 50 mM Tris-HCl, 10 mM reduced Glutathione, pH=8.0 in the elution buffer.

GENE INFORMATION

Gene Name [ALOX12 arachidonate 12-lipoxygenase \[Homo sapiens \]](#)

Official Symbol [ALOX12](#)

Synonyms ALOX12; arachidonate 12-lipoxygenase; arachidonate 12-lipoxygenase, 12S-type;
 12S LOX; platelet 12 LOX; platelet 12-LOX; 12S-lipoxygenase; 12(S)-lipoxygenase;
 platelet-type 12-lipoxygenase; platelet-type lipoxygenase 12; LOG12; 12-LOX; 12S-
 LOX;

Gene ID [239](#)

mRNA Refseq [NM_000697](#)

Protein Refseq [NP_000688](#)

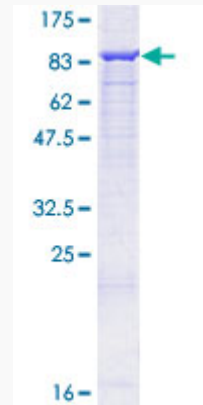
 Tel: 1-631-559-9269 1-516-512-3133

 Email: info@creative-biomart.com  Fax: 1-631-938-8127

 45-1 Ramsey Road, Shirley, NY 11967, USA

MIM 152391

UniProt ID P18054



12.5% SDS-PAGE Stained with Coomassie Blue.

 Tel: 1-631-559-9269 1-516-512-3133

 Email: info@creative-biomart.com  Fax: 1-631-938-8127

 45-1 Ramsey Road, Shirley, NY 11967, USA