

Recombinant Human ALOX12B Protein, GST-tagged

Cat. No. ALOX12B-483H Lot. No. (See product label)

SPECIFICATION

Product Overview	Human ALOX12B full-length ORF (NP_001130.1, 1 a.a. - 701 a.a.) recombinant protein with GST-tag at N-terminal.
Species	Human
Source	Wheat Germ
Description	This gene encodes an enzyme involved in the conversion of arachidonic acid to 12R-hydroxyeicosatetraenoic acid. Mutations in this gene are associated with nonbullous congenital ichthyosiform erythroderma. [provided by RefSeq, Sep 2015]
Molecular Mass	106.8 kDa
AA Sequence	MATYKVRVATGTDLLSGTRDSISLTIVGTQGESHKQLLNHFGRDFATGAVGQYTVQ CPQDLGELIIIRLHKERYAFFPKDPWYCNVYQICAPNGRIYHFPAYQWMDGYETLAL REATGKTTADDSLPVLEHRKEEIRAKQDFYHWRVFLPGLPSYVHIPSYPVRRHR NPNRPEWNGYIPGFPILINFKATKFLNLNLRYSFLKTASFFVRLGPMALAFKVRGLLD CKHSWKRLKDIRKIFPGKKSVMSEYVAEHWAEDTFGYQYLNGVNPGLIRRCTRIPD KFPVTDDMVAPFLGEGTCLQAELEKGNILADYRIMEGIPTVELSGRKQHHCAPLCL LHFGPEGKMMPIAIQLSQTPGPDCEIFLPSDSEWDWLLAKTWVRYAEFYSHEAIAHL LETHLIAEAFCLALLRNLPCHPLYKLLIPHTRYTVQINSIGRAVLLNEGGLSAKGMSL GVEGFAGVMVRALSELTYDSLILPNDFVERGVQDLPGYYRDDSLAVWNALEKYVT EIITYYPSDAAVEGDPELQSWVQEIFKECLLGRESSGFPRCLRTVPELIRYVTIVIYT CSAKHAAVNTGQMEFTAWMPNFPASMRNPPIQTKGLTTLETFMDTLPDVKTTTCITLL

Tel: 1-631-559-9269 1-516-512-3133

Email: info@creative-biomart.com Fax: 1-631-938-8127

45-1 Ramsey Road, Shirley, NY 11967, USA

VLWTLSREPDDRRPLGHFPDIHFVEEAPRRSIEAFRQLNQISHDIRQRNKCLPIPY
YLDPVLIIENSISI

Applications

Enzyme-linked Immunoabsorbent Assay; Western Blot (Recombinant protein);
Antibody Production; Protein Array

Notes

Best use within three months from the date of receipt of this protein.

Storage

Store at -80 centigrade. Aliquot to avoid repeated freezing and thawing.

Storage Buffer

50 mM Tris-HCl, 10 mM reduced Glutathione, pH=8.0 in the elution buffer.

GENE INFORMATION

Gene Name

[ALOX12B arachidonate 12-lipoxygenase, 12R type \[Homo sapiens \]](#)

Official Symbol

[ALOX12B](#)

Synonyms

ALOX12B; arachidonate 12-lipoxygenase, 12R type; arachidonate 12-lipoxygenase,
12R-type; 12R LOX; 12R-lipoxygenase; epidermis-type lipoxygenase 12; 12R-LOX;

Gene ID

[242](#)

mRNA Refseq

[NM_001139](#)

Protein Refseq

[NP_001130](#)

MIM

[603741](#)

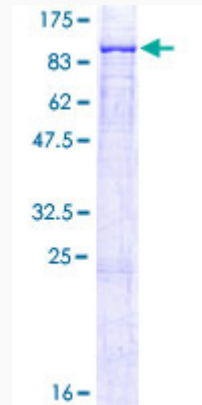
UniProt ID

[O75342](#)

 Tel: 1-631-559-9269 1-516-512-3133

 Email: info@creative-biomart.com  Fax: 1-631-938-8127

 45-1 Ramsey Road, Shirley, NY 11967, USA



12.5% SDS-PAGE Stained with Coomassie Blue.

 Tel: 1-631-559-9269 1-516-512-3133

 Email: info@creative-biomart.com  Fax: 1-631-938-8127

 45-1 Ramsey Road, Shirley, NY 11967, USA