

Recombinant Human ALOX15 Protein, FLAG-tagged

Cat. No. ALOX15-001H Lot. No. (See product label)

SPECIFICATION

Product Overview	Recombinant Human ALOX15 Protein a.a. 2- 662(end), with N-terminal FLAG-tag was expressed in Sf9 insect cells via a baculovirus expression system.
Species	Human
Source	Insect cells
Description	This gene encodes a member of the lipoxygenase family of proteins. The encoded enzyme acts on various polyunsaturated fatty acid substrates to generate various bioactive lipid mediators such as eicosanoids, hepoxilins, lipoxins, and other molecules. The encoded enzyme and its reaction products have been shown to regulate inflammation and immunity. Multiple pseudogenes of this gene have been identified in the human genome.
Molecular Mass	75 kDa
Purity	> 90%
Applications	Suitable for binding studies, as an immunogen, or for Western blotting.
Storage	Store at least 6 months Store at –80 centigrade. Avoid freeze/thaw cycles. Storing diluted enzyme is not recommended, if necessary, use carrier protein (BSA 0.1-0.5%).
Concentration	0.25 mg/mL

 Tel: 1-631-559-9269 1-516-512-3133

 Email: info@creative-biomart.com  Fax: 1-631-938-8127

 45-1 Ramsey Road, Shirley, NY 11967, USA

Storage Buffer	Aqueous buffer solution. 50 mM Tris-HCl, pH 8.0, 138 mM NaCl, 2.7 mM KCl, and 100 ng/μL FLAG peptide.
-----------------------	---

Shipping	At -80 centigrade
-----------------	-------------------

GENE INFORMATION

Gene Name	ALOX15 arachidonate 15-lipoxygenase [Homo sapiens (human)]
------------------	--

Official Symbol	ALOX15
------------------------	------------------------

Synonyms	ALOX15; arachidonate 15-lipoxygenase; LOG15; 12-LOX; 15-LOX; 15-LOX-1; polyunsaturated fatty acid lipoxygenase ALOX15; 12/15-lipoxygenase; 15-LOX type 1; 15-lipoxygenase-1; 15-lipoxygenase type 1; arachidonate 12-lipoxygenase, leukocyte-type; arachidonate omega-6 lipoxygenase; hepoxilin A3 synthase Alox15; linoleate 13S-lipoxygenase; EC 1.13.11.12; EC 1.13.11.31; EC 1.13.11.33
-----------------	---

Gene ID	246
----------------	---------------------

mRNA Refseq	NM_001140
--------------------	---------------------------

Protein Refseq	NP_001131
-----------------------	---------------------------

MIM	152392
------------	------------------------

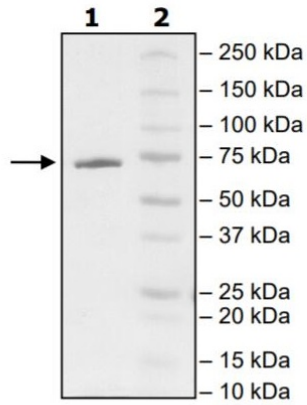
UniProt ID	P16050
-------------------	------------------------

 Tel: 1-631-559-9269 1-516-512-3133

 Email: info@creative-biomart.com  Fax: 1-631-938-8127

 45-1 Ramsey Road, Shirley, NY 11967, USA

SDS-PAGE



Lane 1: 2 μ g ALOX15

Lane 2: Protein Marker

 Tel: 1-631-559-9269 1-516-512-3133

 Email: info@creative-biomart.com  Fax: 1-631-938-8127

 45-1 Ramsey Road, Shirley, NY 11967, USA