

Recombinant Full Length Human ALOX15 Protein, C-Flag-tagged

Cat. No. ALOX15-644HFL **Lot. No.** (See product label)

SPECIFICATION

Product Overview	Recombinant Full Length Human ALOX15 Protein, fused to Flag-tag at C-terminus, was expressed in Mammalian cells.
Species	Human
Source	Mammalian Cells
Description	This gene encodes a member of the lipoxygenase family of proteins. The encoded enzyme acts on various polyunsaturated fatty acid substrates to generate various bioactive lipid mediators such as eicosanoids, hepoxilins, lipoxins, and other molecules. The encoded enzyme and its reaction products have been shown to regulate inflammation and immunity. Multiple pseudogenes of this gene have been identified in the human genome.
Form	25 mM Tris HCl, pH 7.3, 100 mM glycine, 10% glycerol.
Molecular Mass	74.6 kDa
AA Sequence	MGLYRIRVSTGASLYAGSNNQVQLWLVGQHGEAALGKRLWPARGKETELKVEVPE YLGPLL FVKLRKRHL LKDDAWFCN WISVQGP GAGDEVRFPCYRWVEGNGVLSLPE GTGRTVGEDPQGLFQKHREEELEERRKLYR WGNWKDGLILNMAGAKLYDLPVDE RFLEDKRVD FEVSLAKGLADLAIKDSL NVLTCWKDLDDFN RIFWCG QSKLAERVRD SWKEDALFGYQFLNGANPVVLRSAHLPARLVFPPGMEELQAQLEKELEGGTLFEA DFSL LDGIKANVILCSQQHLAAPLVMLKLPD GKLLPMVIQLQLPRTGSPPPPLFLPT

 Tel: 1-631-559-9269 1-516-512-3133

 Email: info@creative-biomart.com  Fax: 1-631-938-8127

 45-1 Ramsey Road, Shirley, NY 11967, USA

DPPMAWLLAKCWVRSS DFQLHELQSHLLRGHLMAEVIVVATMRCLPSIHPIFKLIIPH
 LRYTLEINVRARTGLVSDMGIFDQIMST GGGGHVQLLKQAGAFITYSSFCPPDDLAD
 RGLLGVKSSFYPQDALRLWEIYRYVEGIVSLHYKTDVAVK DDPELQTWCREITEIGL
 QGAQDRGFVSLQARDQVCHFVTMCIFTCTGQHASVHLGQLDWYSWVPNAPCT M
 RLPPPTTKDATLETVMATLPNFHQASLQMSITWQLGRRQPVMVAVGQHEEEYFSGP
 EPKAVLKKFREEL
 AALDKEIEIRNAKLDMPYEYLRPSVVENSVAITRTRPLEQKLISEEDLAANDILDYKDD
 DDKV

Purity	> 80% as determined by SDS-PAGE and Coomassie blue staining.
Stability	Stable for 12 months from the date of receipt of the product under proper storage and handling conditions. Avoid repeated freeze-thaw cycles.
Storage	Store at -80 centigrade.
Concentration	>50 ug/mL as determined by microplate BCA method.
Preparation	Recombinant protein was captured through anti-DDK affinity column followed by conventional chromatography steps.
Protein Families	Druggable Genome
Protein Pathways	Arachidonic acid metabolism, Linoleic acid metabolism, Metabolic pathways
Full Length	Full L.

GENE INFORMATION

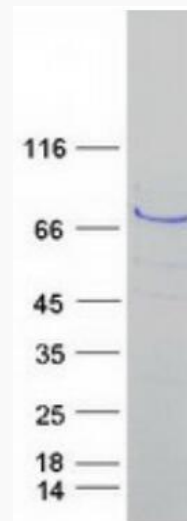
Gene Name [ALOX15 arachidonate 15-lipoxygenase \[Homo sapiens \(human\) \]](#)

 Tel: 1-631-559-9269 1-516-512-3133

 Email: info@creative-biomart.com  Fax: 1-631-938-8127

 45-1 Ramsey Road, Shirley, NY 11967, USA

Official Symbol	ALOX15
Synonyms	LOG15; 12-LOX; 15-LOX; 15-LOX-1
Gene ID	246
mRNA Refseq	NM_001140.5
Protein Refseq	NP_001131.3
MIM	152392
UniProt ID	P16050



Coomassie blue staining of purified ALOX15 protein.

 Tel: 1-631-559-9269 1-516-512-3133

 Email: info@creative-biomart.com  Fax: 1-631-938-8127

 45-1 Ramsey Road, Shirley, NY 11967, USA