

Recombinant Human ALOX15B Protein, His-tagged

Cat. No. ALOX15B-40H Lot. No. (See product label)

SPECIFICATION

Product Overview	Recombinant human ALOX15B protein with a C-terminal His-tag was expressed in E. coli.
Species	Human
Source	E.coli
Description	This gene encodes a member of the lipoxygenase family of structurally related nonheme iron dioxygenases involved in the production of fatty acid hydroperoxides. The encoded protein converts arachidonic acid exclusively to 15S-hydroperoxyeicosatetraenoic acid, while metabolizing linoleic acid less effectively. This gene is located in a cluster of related genes and a pseudogene that spans approximately 100 kilobases on the short arm of chromosome 17. Alternatively spliced transcript variants encoding different isoforms have been described.
Molecular Mass	76 kDa
Purity	≥85% estimated by SDS-PAGE
Unit Definition	One unit is defined as the amount of enzyme required to produce 1 nmol of 15-HpETE per min at 30 centigrade in 50 mM Tris-HCl, pH 7.2, containing 0.003% Polysorbate 20, and 250 μM arachidonic acid.
Stability	≥ 1 year

 Tel: 1-631-559-9269 1-516-512-3133

 Email: info@creative-biomart.com  Fax: 1-631-938-8127

 45-1 Ramsey Road, Shirley, NY 11967, USA

Storage Store it at -80 centigrade

GENE INFORMATION

Gene Name [ALOX15B arachidonate 15-lipoxygenase type B \[Homo sapiens \(human\) \]](#)

Official Symbol [ALOX15B](#)

Synonyms ALOX15B; arachidonate 15-lipoxygenase type B; 15-LOX-2; polyunsaturated fatty acid lipoxygenase ALOX15B; 15-LOX-B; 15S-lipoxygenase; arachidonate 15-lipoxygenase 2; arachidonate 15-lipoxygenase type II; arachidonate 15-lipoxygenase, second type; arachidonate omega(6) lipoxygenase; linoleate 13-lipoxygenase 15-LOb

Gene ID [247](#)

mRNA Refseq [NM_001039130](#)

Protein Refseq [NP_001034219](#)

MIM [603697](#)

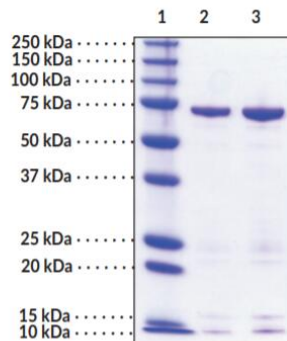
UniProt ID [O15296](#)

 Tel: 1-631-559-9269 1-516-512-3133

 Email: info@creative-biomart.com  Fax: 1-631-938-8127

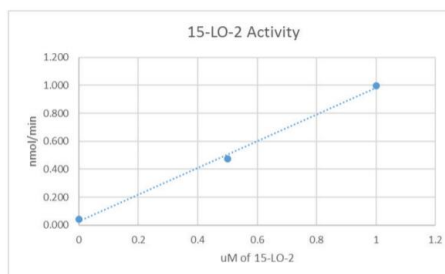
 45-1 Ramsey Road, Shirley, NY 11967, USA

SDS-PAGE Analysis of ALOX15B



Lane 1: MW Markers; Lane 2: 15-LO-2 (human recombinant) (1 μ g); Lane 3: 15-LO-2 (human recombinant) (2 μ g). Representative gel image shown; actual purity may vary between each batch.

Activity Assay



15-LO-2 activity was determined using 50 μ M arachidonic acid and was inhibited using 100 μ M NDGA, a non-selective lipoxygenase inhibitor.

Tel: 1-631-559-9269 1-516-512-3133

Email: info@creative-biomart.com Fax: 1-631-938-8127

45-1 Ramsey Road, Shirley, NY 11967, USA