

## Recombinant Human ALOX15B Protein, GST-tagged

**Cat. No.** ALOX15B-486H    **Lot. No.** (See product label)

### SPECIFICATION

<b>Product Overview</b>	Human ALOX15B full-length ORF ( AAH35217.1, 1 a.a. - 676 a.a.) recombinant protein with GST-tag at N-terminal.
<b>Species</b>	Human
<b>Source</b>	Wheat Germ
<b>Description</b>	This gene encodes a member of the lipoxygenase family of structurally related nonheme iron dioxygenases involved in the production of fatty acid hydroperoxides. The encoded protein converts arachidonic acid exclusively to 15S-hydroperoxyeicosatetraenoic acid, while metabolizing linoleic acid less effectively. This gene is located in a cluster of related genes and a pseudogene that spans approximately 100 kilobases on the short arm of chromosome 17. Alternatively spliced transcript variants encoding different isoforms have been described. [provided by RefSeq, Jul 2008]
<b>Molecular Mass</b>	102.3 kDa
<b>AA Sequence</b>	MAEFRVRVSTGEAFGAGTWDKVSIVGTRGESPPPLDNLGKEFTAGAEEDFQVTLPEDVGRVLLLRVHKAPPVLPPLGPLAPDAWFCRWFQLTPPRGGHLLFPCYQWLEGAGTLVLQEGTAKVSWADHHPVLQQQRQEELQARQEMYQWKAYNPGWPHCLDEKTVEDLELNIKYSTAKNANFYLQAGSFAEMKIKGLLDRKGLWRSLEMKRIFNFRTPAAEHAFEHWQEDAFFASQFLNGLNPVLIRRCHYLPKNFPVTDAMVASVLGPGTSLQAELEKGSFLVDHGILSGIQTNVINGKPKQFSAAPMTLLYQSPGCGPLLPLAIQLSQTPGPNSPIFLPTDDKWDWLLAKTWVRNAEFSFHEALTHLLSHLLPEVFTLATLRQLPH

 Tel: 1-631-559-9269    1-516-512-3133

 Email: [info@creative-biomart.com](mailto:info@creative-biomart.com)     Fax: 1-631-938-8127

 45-1 Ramsey Road, Shirley, NY 11967, USA

CHPLFKLLIPHTRYTLHINTLARELLIVPGQVVDRSTGIGIEGFSELIQRNMKQLNYSLL  
 CLPEDIRTRGVEDIPGYYYRDDGMQIWGAVERFVSEIIGIYYPSDESVDREQLQAW  
 VREIFSKGFLNQESSGIPSSLETREALVQYVTMVIFTCSAKHAASAGQFDSCAWMP  
 NLPPSMQLPPPTSKGLATCEGFIALPPVNATCDVILALWLLSKEPGDQRPLGTYPD  
 EHFTEEAPRRSIATFQSRLAQISRGIQERNRGLVLPYTYLDPPLIENSVSI

**Applications** Enzyme-linked Immunoabsorbent Assay; Western Blot (Recombinant protein);  
 Antibody Production; Protein Array

**Notes** Best use within three months from the date of receipt of this protein.

**Storage** Store at -80 centigrade. Aliquot to avoid repeated freezing and thawing.

**Storage Buffer** 50 mM Tris-HCl, 10 mM reduced Glutathione, pH=8.0 in the elution buffer.

## GENE INFORMATION

**Gene Name** [ALOX15B arachidonate 15-lipoxygenase, type B \[ Homo sapiens \]](#)

**Official Symbol** [ALOX15B](#)

**Synonyms** ALOX15B; arachidonate 15-lipoxygenase, type B; arachidonate 15 lipoxygenase, second type; arachidonate 15-lipoxygenase B; 15 LOX 2; 15-LOX-B; 15S-lipoxygenase; arachidonate 15-lipoxygenase 2; arachidonate omega(6) lipoxygenase; arachidonate 15-lipoxygenase type II; arachidonate 15-lipoxygenase, second type; 15-LOX-2;

**Gene ID** [247](#)

**mRNA Refseq** [NM\\_001039130](#)

 Tel: 1-631-559-9269 1-516-512-3133

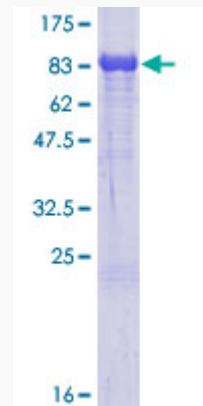
 Email: [info@creative-biomart.com](mailto:info@creative-biomart.com)  Fax: 1-631-938-8127

 45-1 Ramsey Road, Shirley, NY 11967, USA

**Protein Refseq** NP\_001034219

**MIM** 603697

**UniProt ID** O15296



12.5% SDS-PAGE Stained with Coomassie Blue.

 Tel: 1-631-559-9269 1-516-512-3133

 Email: [info@creative-biomart.com](mailto:info@creative-biomart.com)  Fax: 1-631-938-8127

 45-1 Ramsey Road, Shirley, NY 11967, USA