

Recombinant Human ALPI Protein, MYC/DDK-tagged, C13 and N15-labeled

Cat. No. ALPI-024H **Lot. No.** (See product label)

SPECIFICATION

Product Overview	ALPI MS Standard C13 and N15-labeled recombinant protein (NP_001622) with a C-terminal MYC/DDK tag, was expressed in HEK293 cells.
Species	Human
Source	HEK293
Description	There are at least four distinct but related alkaline phosphatases: intestinal, placental, placental-like, and liver/bone/kidney (tissue non-specific). The intestinal alkaline phosphatase gene encodes a digestive brush-border enzyme. This enzyme is a component of the gut mucosal defense system and is thought to function in the detoxification of lipopolysaccharide, and in the prevention of bacterial translocation in the gut.
Molecular Mass	56.81 kDa
AA Sequence	<p>MQGPWVLLLLGLRLQLSLGVIPAEENPAFWNRQAAEALDAAKQLPIQKVAKNLILF LGDGLGVPTVTATRILKGQKNGKLGPEPLAMDRFPYLALSPTYNVDRQVPDSAATA TAYLCGVKANFQTIGLSAAARFNQCNTTRGNEVISVMNRAKQAGKSVGVTTRVQ HASPAGTYAHTVNRNWYSADAMPASARQEGCQDIATQLISNMDIDVILGGGRKYM PMGTPDPEYPADASQNGIRLDGKNLVQEWLAKHQGAWYVWNRTELMQASLDQSV THLMGLFEPGDTKYEIHRDPTLDPSLMEMTEAALRLLSRNPRGFYLFVEGGRIDHGH HEGVAYQALTEAVMFDDAIERAGQLTSEEDTLTLVTADHSHVFSFGGYTLRGSSIFG</p>

 Tel: 1-631-559-9269 1-516-512-3133

 Email: info@creative-biomart.com  Fax: 1-631-938-8127

 45-1 Ramsey Road, Shirley, NY 11967, USA

LAPSKAQDSKAYTSILYGNGPGYVFNSGVRPDVNESESGSPDYQQQAAVPLSSETH
GGEDVAVFARGPQAHLVHGVQEQS FVAHVMAFAACLEPYTACDLAPPACTTDAAH
PVAASLPLLAGTLLLLGASAAPTRTRPLEQKLISEEDLAANDILDYKDDDDKV

Purity > 80% as determined by SDS-PAGE and Coomassie blue staining

Stability Stable for 3 months from receipt of products under proper storage and handling conditions.

Storage Store at -80 centigrade. Avoid repeated freeze-thaw cycles.

Concentration 50 µg/mL as determined by BCA

Storage Buffer 100 mM glycine, 25 mM Tris-HCl, pH 7.3.

GENE INFORMATION

Gene Name [ALPI alkaline phosphatase, intestinal \[Homo sapiens \(human\) \]](#)

Official Symbol [ALPI](#)

Synonyms ALPI alkaline phosphatase, intestinal; IAP; intestinal-type alkaline phosphatase; Kasahara isozyme; alkaline phosphomonoesterase; glycerophosphatase; intestinal alkaline phosphatase; EC 3.1.3.1

Gene ID [248](#)

mRNA Refseq [NM_001631](#)

Protein Refseq [NP_001622](#)

 Tel: 1-631-559-9269 1-516-512-3133

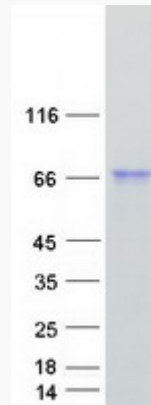
 Email: info@creative-biomart.com  Fax: 1-631-938-8127

 45-1 Ramsey Road, Shirley, NY 11967, USA

MIM 171740

UniProt ID P09923

SDS-PAGE



 Tel: 1-631-559-9269 1-516-512-3133

 Email: info@creative-biomart.com  Fax: 1-631-938-8127

 45-1 Ramsey Road, Shirley, NY 11967, USA