

Recombinant Human ALPI Protein, His-tagged

Cat. No. ALPI-1117H Lot. No. (See product label)

SPECIFICATION

Product Overview	Recombinant Human ALPI Protein (26-500aa) was expressed in E. coli with N-terminal His-tag.
Species	Human
Source	E.coli
ProteinLength	26-500 a.a.
Form	Tris-based buffer, 50% glycerol.
Molecular Mass	55.5 kDa
AA Sequence	ENPAFWNRQAAEALDAAKKLQPIQKVAKNLILFLGDGLGVPTVTATRILKGQKNGKL GPETPLAMDRFPYLALSPTYNVDRQVPDSAATATAYLCGVKANFQTIGLSAAARFNQ CNTTRGNEVISVMNRAKQAGKSVGVTTRVQHASPAGTYAHTVNRNWYSADAMP ASARQEGCQDIATQLISNMDIDVILGGGRKYMFPMPGTPDPEYPADASQNGIRLDGKN LVQEWLAKHQGAWYVWNRTQLMQASLDQSVTHLMGLFEPGDTKYEIHRDPTLDPS LMEMTEAALRLLSRNPRGFYLFVEGGRIDHGHHEGVAYQALTEAVMFDDAIERAGQ LTSEEDTLTLVTADHSHVFSFGGYTLRGSSIFGLAPSKAQDSKAYTSILYGNPGYVF NSGVRPDVNESESGSPDYQQQAAVPLSSETHGGEDVAVFARGPQAHLVHGVQEQ SFVAHVMAFAACLEPYTACDLAPPAC
Purity	Greater than 90% as determined by SDS-PAGE.

 Tel: 1-631-559-9269 1-516-512-3133

 Email: info@creative-biomart.com  Fax: 1-631-938-8127

 45-1 Ramsey Road, Shirley, NY 11967, USA

Storage

The shelf life of liquid form is 6 months at -20 centigrade/-80 centigrade. The shelf life of lyophilized form is 12 months at -20 centigrade/-80 centigrade.

GENE INFORMATION

Gene Name ALPI alkaline phosphatase, intestinal [Homo sapiens]

Official Symbol ALPI

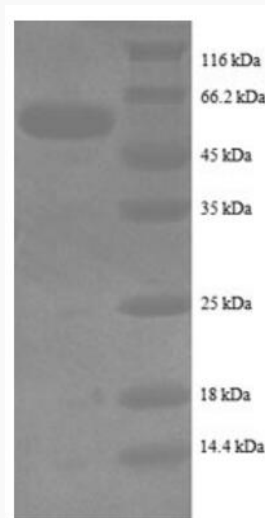
Gene ID 248

mRNA Refseq NM_001631.3

Protein Refseq NP_001622.2

MIM 171740

UniProt ID P09923



 Tel: 1-631-559-9269 1-516-512-3133

 Email: info@creative-biomart.com  Fax: 1-631-938-8127

 45-1 Ramsey Road, Shirley, NY 11967, USA