

## Recombinant Human ALPI Protein (20-503 aa), His-tagged

Cat. No. ALPI-1326H Lot. No. (See product label)

### SPECIFICATION

**Product Overview** Recombinant Human ALPI Protein (20-503 aa) is produced by Yeast expression system. This protein is fused with a 6xHis tag at the N-terminal. Research Area: Signal Transduction. Protein Description: Full Length of Mature Protein.

**Species** Human

**Source** Yeast

**ProteinLength** 20-503 aa

**Form** Tris-based buffer,50% glycerol

**Molecular Mass** 54.4 kDa

**AA Sequence**

VIPAEENPAFWNRQAAEALDAAKKLQPIQKVAKNLILFLGDGLGVPTVTATRILKGGQ  
 KNGKLGPEPLAMDRFPYLALSPTYNVDRQVPDSAATATAYLCGVKANFQTIGLSAA  
 ARFNQCNTTRGNEVISVMNRAKQAGKSVGVVTTTRVQHASPAGTYAHTVNRNWYS  
 DADMPASARQEGCQDIATQLISNMDIDVILGGGRKYMFPMPGTPDPEYPADASQNGI  
 RLDGKNLVQEWLAKHQGAWYVWNRTELMQASLDQSVTHLMGLFEPGDTKYEIHRD  
 PTLDPSEMEMTEAALRLLSRNPRGFYLFVEGGRIDHGHHEGVAYQALTEAVMFDDAI  
 ERAGQLTSEEDTLTLVTADHSHVFSFGGYTLRGSSIFGLAPSKAQDSKAYTSILYGN  
 GPGYVFNSGVRPDVNESESGSPDYQQAAVPLSSETHGGEDVAVFARGPQAHLV  
 HGVQEQSFVAHVMAFAACLEPYTACDLAPPACTTD

**Purity** > 90% as determined by SDS-PAGE.

 Tel: 1-631-559-9269 1-516-512-3133

 Email: [info@creative-biomart.com](mailto:info@creative-biomart.com)  Fax: 1-631-938-8127

 45-1 Ramsey Road, Shirley, NY 11967, USA

<b>Notes</b>	Repeated freezing and thawing is not recommended. Store working aliquots at 4 centigrade for up to one week.
<b>Storage</b>	The shelf life is related to many factors, storage state, buffer ingredients, storage temperature and the stability of the protein itself. Generally, the shelf life of liquid form is 6 months at -20 centigrade/-80 centigrade. The shelf life of lyophilized form is 12 months at -20 centigrade/-80 centigrade.
<b>Concentration</b>	A hardcopy of COA with reconstitution instruction is sent along with the products. Please refer to it for detailed information.

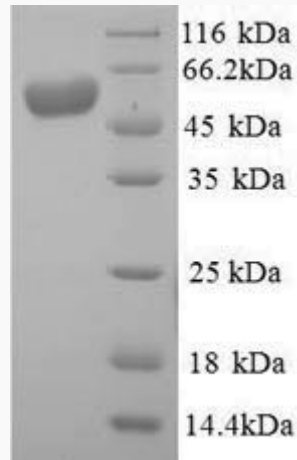
## GENE INFORMATION

<b>Gene Name</b>	ALPI alkaline phosphatase, intestinal [ Homo sapiens ]
<b>Official Symbol</b>	ALPI
<b>Synonyms</b>	ALPI; Kasahara isozyme; glycerophosphatase; IAP;
<b>Gene ID</b>	248
<b>mRNA Refseq</b>	NM_001631
<b>Protein Refseq</b>	NP_001622
<b>MIM</b>	171740
<b>UniProt ID</b>	P09923

 Tel: 1-631-559-9269 1-516-512-3133

 Email: [info@creative-biomart.com](mailto:info@creative-biomart.com)  Fax: 1-631-938-8127

 45-1 Ramsey Road, Shirley, NY 11967, USA



(Tris-Glycine gel) Discontinuous SDS-PAGE (reduced) with 5% enrichment gel and 15% separation gel.

Tel: 1-631-559-9269 1-516-512-3133

Email: [info@creative-biomart.com](mailto:info@creative-biomart.com) Fax: 1-631-938-8127

45-1 Ramsey Road, Shirley, NY 11967, USA