

# Recombinant Human alkaline phosphatase, intestinal Protein, His tagged

**Cat. No.** ALPI-268H    **Lot. No.** (See product label)

## SPECIFICATION

<b>Product Overview</b>	Recombinant human Alkaline phosphatase/APLI protein (P09923) (Val 20-Thr 502) with a His tag at the C-terminus was expressed in HEK293.
<b>Species</b>	Human
<b>Source</b>	HEK293
<b>ProteinLength</b>	20-502aa
<b>Description</b>	There are at least four distinct but related alkaline phosphatases: intestinal, placental, placental-like, and liver/bone/kidney (tissue non-specific). The intestinal alkaline phosphatase gene encodes a digestive brush-border enzyme. This enzyme is a component of the gut mucosal defense system and is thought to function in the detoxification of lipopolysaccharide, and in the prevention of bacterial translocation in the gut. Alkaline phosphatase that can hydrolyze various phosphate compounds. In most mammals there are four different isozymes: placental (ALPP), germ cell (ALPG), intestinal (ALPI) and tissue non-specific (liver/bone/kidney) (ALPL/TNAP).
<b>Tag</b>	C-His
<b>Molecular Mass</b>	53.7 kDa
<b>Endotoxin</b>	Less than 1.0 EU/μg by the LAL method.

 Tel: 1-631-559-9269    1-516-512-3133

 Email: [info@creative-biomart.com](mailto:info@creative-biomart.com)     Fax: 1-631-938-8127

 45-1 Ramsey Road, Shirley, NY 11967, USA

<b>Purity</b>	>95% as determined by SDS-PAGE.
<b>Storage</b>	Please avoid repeated freeze-thaw cycles. Samples are stable for up to twelve months from date of receipt at -20 to -80 centigrade. It is recommended that aliquot the reconstituted solution to minimize freeze-thaw cycles.
<b>Storage Buffer</b>	Lyophilized from a 0.2 µm filtered solution of PBS, pH7.4, 5% Trehalose, 5% mannitol.
<b>Reconstitution</b>	Reconstitute at 250 µg/mL in sterile water.

## GENE INFORMATION

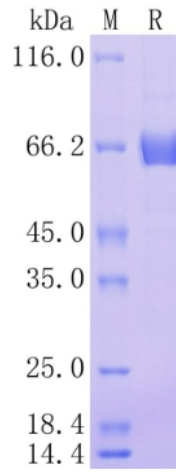
<b>Gene Name</b>	ALPI alkaline phosphatase, intestinal [ Homo sapiens (human) ]
<b>Official Symbol</b>	ALPI
<b>Synonyms</b>	ALPI; alkaline phosphatase, intestinal; intestinal-type alkaline phosphatase; Kasahara isozyme; glycerophosphatase; alkaline phosphomonoesterase; intestinal alkaline phosphatase; IAP;
<b>Gene ID</b>	248
<b>mRNA Refseq</b>	NM_001631
<b>Protein Refseq</b>	NP_001622
<b>MIM</b>	171740
<b>UniProt ID</b>	P09923

 Tel: 1-631-559-9269 1-516-512-3133

 Email: [info@creative-biomart.com](mailto:info@creative-biomart.com)  Fax: 1-631-938-8127

 45-1 Ramsey Road, Shirley, NY 11967, USA

**Protein on SDS-  
PAGE under  
reducing (R)  
condition.**



 Tel: 1-631-559-9269 1-516-512-3133

 Email: [info@creative-biomart.com](mailto:info@creative-biomart.com)  Fax: 1-631-938-8127

 45-1 Ramsey Road, Shirley, NY 11967, USA