

Recombinant Human ALPI protein, His-Flag-tagged

Cat. No. ALPI-4636H **Lot. No.** (See product label)

SPECIFICATION

Product Overview	Recombinant Human ALPI protein(P09923)(Val20-Asp503), fused with N-terminal His-Flag tag, was expressed in HEK293.
Species	Human
Source	HEK293
ProteinLength	Val20-Asp503
Tag	N-His-Flag
Form	Lyophilized from 0.22µm filtered solution in PBS (pH 7.4). Normally 5% trehalose is added as protectant before lyophilization.
Bio-activity	Anti-Alkaline Phosphatase Antibody captured on CM5 Chip via Protein A can bind Human Alkaline phosphatase (Intestinal type) , His Tag with an affinity constant of 1.58 µM as determined in SPR assay (Biacore T200).
Molecular Mass	The protein has a predicted MW of 54.5 kDa. Due to glycosylation, the protein migrates to 63-73 kDa based on Tris-Bis PAGE result.
Endotoxin	Less than 1EU per µg by the LAL method.
Purity	> 95% as determined by Tris-Bis PAGE; > 95% as determined by HPLC

 Tel: 1-631-559-9269 1-516-512-3133

 Email: info@creative-biomart.com  Fax: 1-631-938-8127

 45-1 Ramsey Road, Shirley, NY 11967, USA

Storage Reconstituted protein stable at -80°C for 12 months, 4°C for 1 week. Use a manual defrost freezer and avoid repeated freeze-thaw cycles.

Reconstitution Centrifuge tubes before opening. Reconstituting to a concentration more than 100 µg/ml is recommended. Dissolve the lyophilized protein in distilled water.

GENE INFORMATION

Gene Name [ALPI alkaline phosphatase, intestinal \[Homo sapiens \]](#)

Official Symbol [ALPI](#)

Synonyms ALPI; alkaline phosphatase, intestinal; intestinal-type alkaline phosphatase; Kasahara isozyme; glycerophosphatase; alkaline phosphomonoesterase; intestinal alkaline phosphatase; IAP;

Gene ID [248](#)

mRNA Refseq [NM_001631](#)

Protein Refseq [NP_001622](#)

MIM [171740](#)

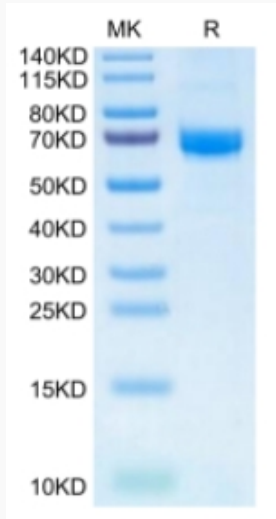
UniProt ID [P09923](#)

 Tel: 1-631-559-9269 1-516-512-3133

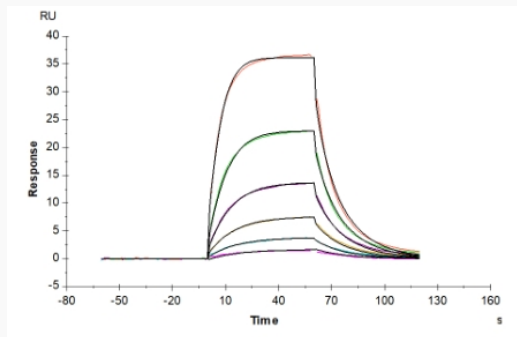
 Email: info@creative-biomart.com  Fax: 1-631-938-8127

 45-1 Ramsey Road, Shirley, NY 11967, USA

Tris-Bis PAGE



SPR Data



 Tel: 1-631-559-9269 1-516-512-3133

 Email: info@creative-biomart.com  Fax: 1-631-938-8127

 45-1 Ramsey Road, Shirley, NY 11967, USA