

## Recombinant Human ALPI Protein, GST-tagged

**Cat. No.** ALPI-490H    **Lot. No.** (See product label)

### SPECIFICATION

<b>Product Overview</b>	Human ALPI partial ORF ( NP_001622, 74 a.a. - 162 a.a.) recombinant protein with GST-tag at N-terminal.
<b>Species</b>	Human
<b>Source</b>	Wheat Germ
<b>Description</b>	There are at least four distinct but related alkaline phosphatases: intestinal, placental, placental-like, and liver/bone/kidney (tissue non-specific). The intestinal alkaline phosphatase gene encodes a digestive brush-border enzyme. This enzyme is a component of the gut mucosal defense system and is thought to function in the detoxification of lipopolysaccharide, and in the prevention of bacterial translocation in the gut. [provided by RefSeq, Dec 2014]
<b>Molecular Mass</b>	35.53 kDa
<b>AA Sequence</b>	LKGQKNGKLGPEPLAMDRFPYLALSPTYNVDRQVPDSAATATAYLCGVKANFQTI GLSAAARFNQCNTTRGNEVISVMNRAKQAGKSV
<b>Applications</b>	Enzyme-linked Immunoabsorbent Assay; Western Blot (Recombinant protein); Antibody Production; Protein Array
<b>Notes</b>	Best use within three months from the date of receipt of this protein.
<b>Storage</b>	Store at -80 centigrade. Aliquot to avoid repeated freezing and thawing.

 Tel: 1-631-559-9269    1-516-512-3133

 Email: [info@creative-biomart.com](mailto:info@creative-biomart.com)     Fax: 1-631-938-8127

 45-1 Ramsey Road, Shirley, NY 11967, USA

**Storage Buffer** 50 mM Tris-HCl, 10 mM reduced Glutathione, pH=8.0 in the elution buffer.

## GENE INFORMATION

**Gene Name** ALPI alkaline phosphatase, intestinal [ Homo sapiens ]

**Official Symbol** ALPI

**Synonyms** ALPI; alkaline phosphatase, intestinal; intestinal-type alkaline phosphatase; Kasahara isozyme; glycerophosphatase; alkaline phosphomonoesterase; intestinal alkaline phosphatase; IAP;

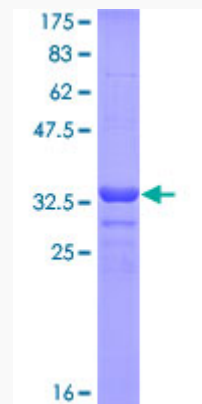
**Gene ID** 248

**mRNA Refseq** NM\_001631

**Protein Refseq** NP\_001622

**MIM** 171740

**UniProt ID** P09923



 Tel: 1-631-559-9269 1-516-512-3133

 Email: [info@creative-biomart.com](mailto:info@creative-biomart.com)  Fax: 1-631-938-8127

 45-1 Ramsey Road, Shirley, NY 11967, USA



12.5% SDS-PAGE Stained with Coomassie Blue.

 Tel: 1-631-559-9269 1-516-512-3133

 Email: [info@creative-biomart.com](mailto:info@creative-biomart.com)  Fax: 1-631-938-8127

 45-1 Ramsey Road, Shirley, NY 11967, USA