

## Active Recombinant Human ALPL Protein (18-501aa), C-His-tagged

Cat. No. ALPL-01H Lot. No. (See product label)

### SPECIFICATION

**Product Overview** Recombinant human Alkaline Phosphatase/ALPL (18-501aa), fused to His-tag at C-terminus, was expressed in HEK293 cell and purified by using conventional chromatography techniques.

**Species** Human

**Source** HEK293


**ProteinLength** 18-501aa

**Description** This gene encodes a member of the alkaline phosphatase family of proteins. There are at least four distinct but related alkaline phosphatases: intestinal, placental, placental-like, and liver/bone/kidney (tissue non-specific). The first three are located together on chromosome 2, while the tissue non-specific form is located on chromosome 1. The product of this gene is a membrane bound glycosylated enzyme that is not expressed in any particular tissue and is, therefore, referred to as the tissue-nonspecific form of the enzyme. Alternative splicing results in multiple transcript variants, at least one of which encodes a preproprotein that is proteolytically processed to generate the mature enzyme. This enzyme may play a role in bone mineralization. Mutations in this gene have been linked to hypophosphatasia, a disorder that is characterized by hypercalcemia and skeletal defects.

**Form** Liquid

 Tel: 1-631-559-9269 1-516-512-3133

 Email: [info@creative-biomart.com](mailto:info@creative-biomart.com)  Fax: 1-631-938-8127

 45-1 Ramsey Road, Shirley, NY 11967, USA

<b>Bio-activity</b>	> 40,000 pmol/min/μg and is defined as the amount of enzyme that hydrolyze 1pmole of 4-Methylumbelliferyl phosphate to phosphate and 4-Methylumbelliferone per minute at pH 8.8 at 37 centigrade.
<b>Molecular Mass</b>	54.3 kDa (493aa)
<b>AA Sequence</b>	<p>LVPEKEKDPKYWRDQAQETLKYALELQKLNTNVAKNVIMFLGDGMGVSTVTAARILK  GQLHHNPGEETRLEMDKFPFVALSKTYNTNAQVPDSAGTATAYLCGVKANEGTVG  VSAATERSRCNTTQGNEVTSILRWAKDAGKSVGIVTTTRVNHATPSAAYAHSADR  WYSDNEMPPEALSQGCKDIAYQLMHNIRDIDVIMGGGRKYMYPKNKTDVEYESDEK  ARGTRLDGLDLVDTWKSFKPRYKSHFIWNRTPELLDPHNVDYLLGLFEPGDMQY  ELNRNNVTDPSLSEMVVVAIQILRKNPKGFFLLVEGGRIDHGHHEGKAKQALHEAVE  MDRAIGQAGSLTSSDRTLTVVTADHSHVFTFGGYTPRGNSIFGLAPMLSDTDKKPFT  AILYGNPGYKVVGGERENVSMVDYAHNNYQAQSAVPLRHETHGGEDVAVFSKGP  MAHLLHGVHEQNYVPHVMAYAACIGANLGHCAPAS</p>
<b>Endotoxin</b>	< 1 EU/μg of protein (determined by LAL method)
<b>Purity</b>	> 95% by SDS-PAGE
<b>Applications</b>	SDS-PAGE, Enzyme Activity
<b>Notes</b>	For research use only. This product is not intended or approved for human, diagnostics or veterinary use.
<b>Storage</b>	Can be stored at +2 to +8 centigrade for 1 week. For long term storage, aliquot and store at -20 to -80 centigrade. Avoid repeated freezing and thawing cycles.
<b>Concentration</b>	1 mg/mL (determined by Absorbance at 280nm)

 Tel: 1-631-559-9269 1-516-512-3133

 Email: [info@creative-biomart.com](mailto:info@creative-biomart.com)  Fax: 1-631-938-8127

 45-1 Ramsey Road, Shirley, NY 11967, USA

**Storage Buffer** Phosphate-Buffered Saline (pH 7.4) containing 10% glycerol

## GENE INFORMATION

**Gene Name** [ALPL alkaline phosphatase, liver/bone/kidney \[ Homo sapiens \(human\) \]](#)

**Official Symbol** [ALPL](#)

**Synonyms** ALPL; alkaline phosphatase, liver/bone/kidney; HOPS; alkaline phosphatase, tissue-nonspecific isozyme; TNSALP; glycerophosphatase; tissue-nonspecific ALP; alkaline phosphomonoesterase; liver/bone/kidney-type alkaline phosphatase; alkaline phosphatase liver/bone/kidney isozyme; TNAP; APTNAP; AP-TNAP; FLJ40094; FLJ93059; MGC161443; MGC167935;

**Gene ID** [249](#)

**mRNA Refseq** [NM\\_000478](#)

**Protein Refseq** [NP\\_000469](#)

**MIM** [171760](#)

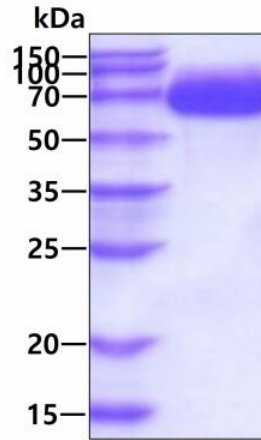
**UniProt ID** [P05186](#)

 Tel: 1-631-559-9269 1-516-512-3133


 Email: [info@creative-biomart.com](mailto:info@creative-biomart.com)  Fax: 1-631-938-8127

 45-1 Ramsey Road, Shirley, NY 11967, USA

**SDS-PAGE**



3 µg by SDS-PAGE under reducing condition and visualized by coomassie blue stain

 Tel: 1-631-559-9269 1-516-512-3133

 Email: [info@creative-biomart.com](mailto:info@creative-biomart.com)  Fax: 1-631-938-8127

 45-1 Ramsey Road, Shirley, NY 11967, USA