

# Recombinant Human ALPL Protein, MYC/DDK-tagged, C13 and N15-labeled

**Cat. No.** ALPL-028H    **Lot. No.** (See product label)

## SPECIFICATION

<b>Product Overview</b>	ALPL MS Standard C13 and N15-labeled recombinant protein (NP_000469) with a C-terminal MYC/DDK tag, was expressed in HEK293 cells.
<b>Species</b>	Human
<b>Source</b>	HEK293
<b>Description</b>	<p>This gene encodes a member of the alkaline phosphatase family of proteins. There are at least four distinct but related alkaline phosphatases: intestinal, placental, placental-like, and liver/bone/kidney (tissue non-specific). The first three are located together on chromosome 2, while the tissue non-specific form is located on chromosome 1. The product of this gene is a membrane bound glycosylated enzyme that is not expressed in any particular tissue and is, therefore, referred to as the tissue-nonspecific form of the enzyme. Alternative splicing results in multiple transcript variants, at least one of which encodes a preproprotein that is proteolytically processed to generate the mature enzyme. This enzyme may play a role in bone mineralization. Mutations in this gene have been linked to hypophosphatasia, a disorder that is characterized by hypercalcemia and skeletal defects.</p>
<b>Molecular Mass</b>	57.3 kDa
<b>AA Sequence</b>	MISPFLVLAIGTCLTNSLVPEKEKDPKYWRDQAQETLKYALELQKLNTNVAKNVIMFLGDGMGVSTVTAARILKGQLHHNPGEETRLEMDKFPFVALSKTYNTNAQVPDSAGTA

 Tel: 1-631-559-9269    1-516-512-3133

 Email: [info@creative-biomart.com](mailto:info@creative-biomart.com)     Fax: 1-631-938-8127

 45-1 Ramsey Road, Shirley, NY 11967, USA

TAYLCGVKANEGTVGVSAATERSRCNTTQGNEVTSILRWAKDAGKSVGIVTTTRVN  
 HATPSAAYAHSADRDWYSDNEMPPEALSQGCKDIAYQLMHNIRDIDVIMGGGRKYM  
 YPKNKTDVEYESDEKARGTRLDGLDLVDTWKSFKPRYKSHSHFIWNRTELLTLDPHN  
 VDYLLGLFEPGDMQYELNRNNVTDPSLSEMVVVAIQILRKNPKGFFLLVEGGRIDHG  
 HHEGKAKQALHEAVEMDRAIGQAGSLTSSEDTLTVVTADHSHVFTFGGYTPRGNSI  
 FGLAPMLSDTDKKPFTAILYGNPGYKVVGGERENVSMVDYAHNNYQAQSAVPLR  
 HETHGGEDVAVFSKGPMAHLLHGVHEQNYVPHVMAYAACIGANLGHCAPASSAGS  
 LAAGPLLLALALYPLSVLFTTRTRPLEQKLISEEDLAANDILDYKDDDDKV

**Purity** > 80% as determined by SDS-PAGE and Coomassie blue staining

**Stability** Stable for 3 months from receipt of products under proper storage and handling conditions.

**Storage** Store at -80 centigrade. Avoid repeated freeze-thaw cycles.

**Concentration** 50 µg/mL as determined by BCA

**Storage Buffer** 100 mM glycine, 25 mM Tris-HCl, pH 7.3.

## GENE INFORMATION

**Gene Name** ALPL alkaline phosphatase, biomineralization associated [ Homo sapiens (human) ]

**Official Symbol** ALPL

**Synonyms** ALPL; alkaline phosphatase, biomineralization associated; AP-TNAP; APTNAP; HOPS; TNALP; TNAP; TNSALP; alkaline phosphatase, tissue-nonspecific isozyme; alkaline phosphatase liver/bone/kidney isozyme; alkaline phosphatase, liver/bone/kidney; liver/bone/kidney-type alkaline phosphatase; tissue non-specific alkaline phosphatase; tissue-nonspecific ALP; EC 3.1.3.1

 Tel: 1-631-559-9269 1-516-512-3133

 Email: [info@creative-biomart.com](mailto:info@creative-biomart.com)  Fax: 1-631-938-8127

 45-1 Ramsey Road, Shirley, NY 11967, USA

Gene ID 249

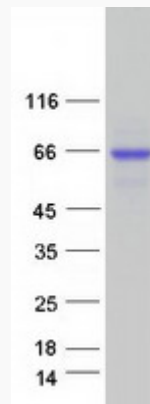
mRNA Refseq NM\_000478

Protein Refseq NP\_000469

MIM 171760

UniProt ID P05186

SDS-PAGE



Tel: 1-631-559-9269 1-516-512-3133

Email: [info@creative-biomart.com](mailto:info@creative-biomart.com) Fax: 1-631-938-8127

45-1 Ramsey Road, Shirley, NY 11967, USA