

# Recombinant Full Length Human ALPL Protein, N-His-tagged

Cat. No. ALPL-1347HFL Lot. No. (See product label)

## SPECIFICATION

**Product Overview** Recombinant Full Length Human ALPL Protein, fused to His-tag at N-terminus, was expressed in E. coli.

**Species** Human

**Source** E.coli

**Description** This gene encodes a member of the alkaline phosphatase family of proteins. There are at least four distinct but related alkaline phosphatases: intestinal, placental, placental-like, and liver/bone/kidney (tissue non-specific). The first three are located together on chromosome 2, while the tissue non-specific form is located on chromosome 1. The product of this gene is a membrane bound glycosylated enzyme that is not expressed in any particular tissue and is, therefore, referred to as the tissue-nonspecific form of the enzyme. Alternative splicing results in multiple transcript variants, at least one of which encodes a preproprotein that is proteolytically processed to generate the mature enzyme. This enzyme may play a role in bone mineralization. Mutations in this gene have been linked to hypophosphatasia, a disorder that is characterized by hypercalcemia and skeletal defects.

**Form** 25mM Tris, pH8.0, 150 mM NaCl, 10% glycerol, 1 % Sarkosyl.

**Molecular Mass** 50.9 kDa

**AA Sequence** A DNA sequence encoding human full-length ALPL.

 Tel: 1-631-559-9269 1-516-512-3133

 Email: [info@creative-biomart.com](mailto:info@creative-biomart.com)  Fax: 1-631-938-8127

 45-1 Ramsey Road, Shirley, NY 11967, USA

<b>Purity</b>	> 80% as determined by SDS-PAGE and Coomassie blue staining.
<b>Stability</b>	Stable for 12 months from the date of receipt of the product under proper storage and handling conditions. Avoid repeated freeze-thaw cycles.
<b>Storage</b>	Store at -80 centigrade.
<b>Concentration</b>	>50 ug/mL as determined by microplate BCA method.
<b>Preparation</b>	Recombinant protein was captured through anti-DDK affinity column followed by conventional chromatography steps.
<b>Protein Families</b>	Druggable Genome
<b>Protein Pathways</b>	Folate biosynthesis, Metabolic pathways
<b>Full Length</b>	Full L.

## GENE INFORMATION

<b>Gene Name</b>	<a href="#">ALPL alkaline phosphatase, biomineralization associated [ Homo sapiens (human) ]</a>
<b>Official Symbol</b>	<a href="#">ALPL</a>
<b>Synonyms</b>	HOPS; HPPA; HPPC; HPPI; HPPO; TNAP; TNALP; APTNAP; TNSALP; AP-TNAP; TNS-ALP
<b>Gene ID</b>	<a href="#">249</a>
<b>mRNA Refseq</b>	<a href="#">NM_000478.6</a>

 Tel: 1-631-559-9269 1-516-512-3133

 Email: [info@creative-biomart.com](mailto:info@creative-biomart.com)  Fax: 1-631-938-8127

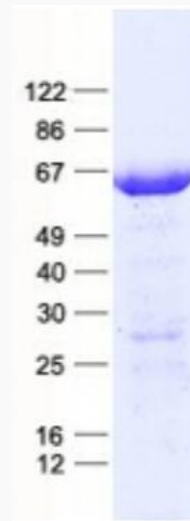
 45-1 Ramsey Road, Shirley, NY 11967, USA

**Protein Refseq** NP\_000469.3

**MIM** 171760

**UniProt ID** P05186

**SDS-PAGE**



 Tel: 1-631-559-9269 1-516-512-3133

 Email: [info@creative-biomart.com](mailto:info@creative-biomart.com)  Fax: 1-631-938-8127

 45-1 Ramsey Road, Shirley, NY 11967, USA