

Recombinant Rat ALPL Protein (18-501 aa), His-SUMO-tagged

Cat. No. ALPL-2155R Lot. No. (See product label)

SPECIFICATION

Product Overview Recombinant Rat ALPL Protein (18-501 aa) is produced by E. coli expression system. This protein is fused with a 6xHis-SUMO tag at the N-terminal. Research Area: Cell Biology. Protein Description: Full Length of Mature Protein.

Species Rat

Source E.coli

ProteinLength 18-501 aa

Form Tris-based buffer,50% glycerol

Molecular Mass 69.5 kDa

AA Sequence

```
FVPEKEKDPSYWRQQAQETLKNALKLQKLNTNVAKNIIMFLGDGMGVSTVTAARILK
GQLHHNTGEETRLEMDKFPFVALSKTYNTNAQVPDSAGTATAYLCGVKANEGTVGV
SAATERTRCNTTQGNEVTSILRWAKDAGKSVGIVTTTRVNHATPSAAYAHSADRDW
YSDNEMPPEALSQGCKDIAYQLMHNKIDIDVIMGGGRKYMYPKNRTDVEYELDEKA
RGTRLDGLDLISIWKSFKPRHKHSHYVWRNTELLALDPSRVDYLLGLFEPGDMQYEL
NRNLTDPSSLSEMVEVALRILTKNPKGFFLLVEGGRIDHGHHEGKAKQALHEAVEMD
EAIGKAGTMTSQKDTLTVVTADHSHVFTFGGYTPRGNSIFGLAPMVSDTDKPKFTAIL
YGNPGYKVVVDGERENVSMVDYAHNNYQAQSAVPLRHETHGGEDVAVFAKGPMA
HLLHGVHEQNYIPHVMAYASCIGANLDHCAWAS
```

Purity > 90% as determined by SDS-PAGE.

 Tel: 1-631-559-9269 1-516-512-3133

 Email: info@creative-biomart.com  Fax: 1-631-938-8127

 45-1 Ramsey Road, Shirley, NY 11967, USA

Notes	Repeated freezing and thawing is not recommended. Store working aliquots at 4 centigrade for up to one week.
Storage	The shelf life is related to many factors, storage state, buffer ingredients, storage temperature and the stability of the protein itself. Generally, the shelf life of liquid form is 6 months at -20 centigrade/-80 centigrade. The shelf life of lyophilized form is 12 months at -20 centigrade/-80 centigrade.
Concentration	A hardcopy of COA with reconstitution instruction is sent along with the products.

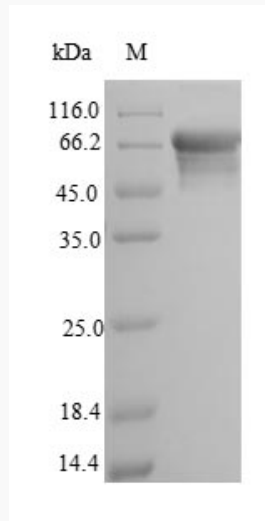
GENE INFORMATION

Gene Name	Alpl alkaline phosphatase, liver/bone/kidney [Rattus norvegicus]
Official Symbol	ALPL
Synonyms	ALPL; TNSALP; AP-TNAP; Akp2; PHOA; MGC93545;
Gene ID	25586
mRNA Refseq	NM_013059
Protein Refseq	NP_037191
UniProt ID	P08289

 Tel: 1-631-559-9269 1-516-512-3133

 Email: info@creative-biomart.com  Fax: 1-631-938-8127

 45-1 Ramsey Road, Shirley, NY 11967, USA



(Tris-Glycine gel) Discontinuous SDS-PAGE (reduced) with 5% enrichment gel and 15% separation gel.

 Tel: 1-631-559-9269 1-516-512-3133

 Email: info@creative-biomart.com  Fax: 1-631-938-8127

 45-1 Ramsey Road, Shirley, NY 11967, USA