

## Active Recombinant Human ALPL protein, His tagged

**Cat. No.** ALPL-894H    **Lot. No.** (See product label)

### SPECIFICATION

<b>Product Overview</b>	Active Recombinant Human ALPL protein(NP_000469.3) (Met 1-Ser 502) was expressed in HEK293 with a C-terminal polyhistidine tag.
<b>Species</b>	Human
<b>Source</b>	HEK293
<b>ProteinLength</b>	1-502 aa
<b>Form</b>	Lyophilized from sterile 25mM Tris, 0.15M NaCl, pH 7.5.
<b>Bio-activity</b>	Measured by its ability to cleave a fluorogenic substrate, 4-Methylumbelliferyl phosphate (4-MUP). The specific activity is > 50, 000 pmoles/min/μg.
<b>Molecular Mass</b>	The recombinant human ALPL consists of 496 amino acids and predicts a molecular mass of 55 kDa. As a result of glycosylation, rhALPL migrates as approximately 65 kDa band in SDS-PAGE under reducing conditions.
<b>Endotoxin</b>	< 1.0 EU per μg protein as determined by the LAL method.
<b>Purity</b>	> 95 % as determined by SDS-PAGE
<b>Storage</b>	Store it under sterile conditions at -20°C to -80°C upon receiving. Recommend to aliquot the protein into smaller quantities for optimal storage. Avoid repeated freeze-thaw cycles.

 Tel: 1-631-559-9269    1-516-512-3133

 Email: [info@creative-biomart.com](mailto:info@creative-biomart.com)     Fax: 1-631-938-8127

 45-1 Ramsey Road, Shirley, NY 11967, USA

**Reconstitution** It is recommended that sterile water be added to the vial to prepare a stock solution of 0.2 ug/ul. Centrifuge the vial at 4°C before opening to recover the entire contents.

## GENE INFORMATION

**Gene Name** ALPL alkaline phosphatase, liver/bone/kidney [ Homo sapiens ]

**Official Symbol** ALPL

**Synonyms** ALPL; alkaline phosphatase, liver/bone/kidney; HOPS; alkaline phosphatase, tissue-nonspecific isozyme; TNSALP; glycerophosphatase; tissue-nonspecific ALP; alkaline phosphomonoesterase; liver/bone/kidney-type alkaline phosphatase; alkaline phosphatase liver/bone/kidney isozyme; TNAP; APTNAP; AP-TNAP; FLJ40094; FLJ93059; MGC161443; MGC167935;

**Gene ID** 249

**mRNA Refseq** NM\_000478

**Protein Refseq** NP\_000469

**MIM** 171760

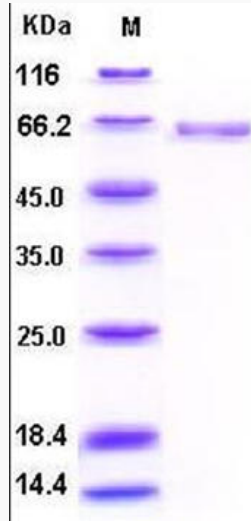
**UniProt ID** P05186

 Tel: 1-631-559-9269 1-516-512-3133

 Email: [info@creative-biomart.com](mailto:info@creative-biomart.com)  Fax: 1-631-938-8127

 45-1 Ramsey Road, Shirley, NY 11967, USA

**SDS-PAGE**



 Tel: 1-631-559-9269 1-516-512-3133

 Email: [info@creative-biomart.com](mailto:info@creative-biomart.com)  Fax: 1-631-938-8127

 45-1 Ramsey Road, Shirley, NY 11967, USA