

Recombinant Human ALPP Protein, His-tagged

Cat. No. ALPP-124H Lot. No. (See product label)

SPECIFICATION

Product Overview	Recombinant Human ALPP Protein (Ile23-Asp506) with N-His tag was expressed in E. coli.
Species	Human
Source	E.coli
ProteinLength	Ile23-Asp506
Description	<p>The protein encoded by this gene is an alkaline phosphatase, a metalloenzyme that catalyzes the hydrolysis of phosphoric acid monoesters. It belongs to a multigene family composed of four alkaline phosphatase isoenzymes. The enzyme functions as a homodimer and has a catalytic site containing one magnesium and two zinc ions, which are required for its enzymatic function. One of the main sources of this enzyme is the liver, and thus, it's one of several indicators of liver injury in different clinical conditions. In pregnant women, this protein is primarily expressed in placental and endometrial tissue, however, strong ectopic expression has been detected in ovarian adenocarcinoma, serous cystadenocarcinoma, and other ovarian cancer cells.</p>
Form	Freeze-dried powder
Molecular Mass	Predicted Molecular Mass: 56.4 kDa Accurate Molecular Mass: 56 kDa
Purity	> 95%

 Tel: 1-631-559-9269 1-516-512-3133

 Email: info@creative-biomart.com  Fax: 1-631-938-8127

 45-1 Ramsey Road, Shirley, NY 11967, USA

Applications	Positive Control; Immunogen; SDS-PAGE; WB.
Stability	The thermal stability is described by the loss rate. The loss rate was determined by accelerated thermal degradation test, that is, incubate the protein at 37 centigrade for 48h, and no obvious degradation and precipitation were observed. The loss rate is less than 5% within the expiration date under appropriate storage condition.
Storage	Avoid repeated freeze/thaw cycles. Store at 2-8 centigrade for one month. Aliquot and store at -80 centigrade for 12 months.
Storage Buffer	20mM Tris, 150mM NaCl, pH8.0, containing 1mM EDTA, 1mM DTT, 0.01% SKL, 5% Trehalose and Proclin300.
Reconstitution	Reconstitute in sterile water to a concentration of 0.1-1.0 mg/mL. Do not vortex.

GENE INFORMATION

Gene Name	ALPP alkaline phosphatase, placental [Homo sapiens (human)]
Official Symbol	ALPP
Synonyms	ALPP; alkaline phosphatase, placental; alkaline phosphatase, placental (Regan isozyme); alkaline phosphatase, placental type; Regan isozyme; PLAP-1; glycerophosphatase; alkaline phosphomonoesterase; placental alkaline phosphatase 1; alkaline phosphatase Regan isozyme; ALP; PALP; PLAP; FLJ61142
Gene ID	250
mRNA Refseq	NM_001632
Protein Refseq	NP_001623

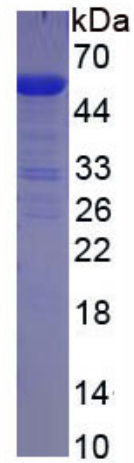
 Tel: 1-631-559-9269 1-516-512-3133

 Email: info@creative-biomart.com  Fax: 1-631-938-8127

 45-1 Ramsey Road, Shirley, NY 11967, USA

MIM 171800

UniProt ID P05187



Tel: 1-631-559-9269 1-516-512-3133

Email: info@creative-biomart.com Fax: 1-631-938-8127

45-1 Ramsey Road, Shirley, NY 11967, USA