

Recombinant Full Length Human ALPP Protein, C-Flag-tagged

Cat. No. ALPP-150HFL Lot. No. (See product label)

SPECIFICATION

Product Overview	Recombinant Full Length Human ALPP Protein, fused to Flag-tag at C-terminus, was expressed in Mammalian cells.
Species	Human
Source	Mammalian Cells
Description	The protein encoded by this gene is an alkaline phosphatase, a metalloenzyme that catalyzes the hydrolysis of phosphoric acid monoesters. It belongs to a multigene family composed of four alkaline phosphatase isoenzymes. The enzyme functions as a homodimer and has a catalytic site containing one magnesium and two zinc ions, which are required for its enzymatic function. One of the main sources of this enzyme is the liver, and thus, it's one of several indicators of liver injury in different clinical conditions. In pregnant women, this protein is primarily expressed in placental and endometrial tissue, however, strong ectopic expression has been detected in ovarian adenocarcinoma, serous cystadenocarcinoma, and other ovarian cancer cells.
Form	25 mM Tris HCl, pH 7.3, 100 mM glycine, 10% glycerol.
Molecular Mass	55.5 kDa
AA Sequence	MLGPCMLLLLLLLGLRLQLSLGIIPVEEENPDFWNREAAEALGAAKKLQPAQTAAKNL IIFLDGGMGVST VTAARILKGQKKDKLGP E I PLAMDRFPYVALSKTYNVDKHVPDSG ATATAYLCGVKGNFQTIGLSAAARF NQCNTTRGNEVISVMNRAKKAGKSVGVT RVQHASPAGTYAHTVNRNWYSDADVPASARQEGCQDIAT QLISNMDIDVILGGGRK

 Tel: 1-631-559-9269 1-516-512-3133

 Email: info@creative-biomart.com  Fax: 1-631-938-8127

 45-1 Ramsey Road, Shirley, NY 11967, USA



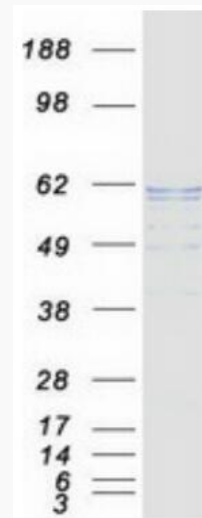
YMFRMGTPDPEYPDDYSQGGTRLDGKNLVQEWLAKRQGARYVWNRTLMQASL
 DPSVTHLMGLFEPGDMKYEIHRDSTLDPSLMEMTEAALRLLSRNPRGFFLFVEGGRI
 DHGHESRAYRAL TETIMFDDAIERAGQLTSEEDTLSLVTADHSHVFSFGGYPLRG
 SSIFGLAPGKARDRKAYTVLLYGNGPG YVLKDGARPDVTESESGSPEYRQQSAVPL
 DEETHAGEDVAVFARGPQAHLVHGVQEQTFAHVMAFAACL
 EPYTACDLAPPAGTTDAAHPGRSVVPALLPLLAGTLLLLLETATAPTRTRPLEQKLISE
 EDLAANDILDYKDDDDKV

Purity	> 80% as determined by SDS-PAGE and Coomassie blue staining.
Stability	Stable for 12 months from the date of receipt of the product under proper storage and handling conditions. Avoid repeated freeze-thaw cycles.
Storage	Store at -80 centigrade.
Concentration	>50 ug/mL as determined by microplate BCA method.
Preparation	Recombinant protein was captured through anti-DDK affinity column followed by conventional chromatography steps.
Protein Pathways	Folate biosynthesis, Metabolic pathways
Full Length	Full L.

GENE INFORMATION

Gene Name	ALPP alkaline phosphatase, placental [Homo sapiens (human)]
Official Symbol	ALPP
Synonyms	ALP; IAP; ALPI; PALP; PLAP; PLAP-1

Gene ID	250
mRNA Refseq	NM_001632.5
Protein Refseq	NP_001623.3
MIM	171800
UniProt ID	P05187



Coomassie blue staining of purified ALPP protein.

Tel: 1-631-559-9269 1-516-512-3133

Email: info@creative-biomart.com Fax: 1-631-938-8127

45-1 Ramsey Road, Shirley, NY 11967, USA