

Recombinant Human ALPP Protein, Myc/DDK-tagged, C13 and N15-labeled

Cat. No. ALPP-1821H **Lot. No.** (See product label)

SPECIFICATION

Product Overview	ALPP MS Standard C13 and N15-labeled recombinant protein (NP_001623) with a C-terminal MYC/DDK tag, was expressed in HEK293 cells.
Species	Human
Source	HEK293
Description	The protein encoded by this gene is an alkaline phosphatase, a metalloenzyme that catalyzes the hydrolysis of phosphoric acid monoesters. It belongs to a multigene family composed of four alkaline phosphatase isoenzymes. The enzyme functions as a homodimer and has a catalytic site containing one magnesium and two zinc ions, which are required for its enzymatic function. The protein is primarily expressed in placental and endometrial tissue; however, strong ectopic expression has been detected in ovarian adenocarcinoma, serous cystadenocarcinoma, and other ovarian cancer cells.
Molecular Mass	58 kDa
AA Sequence	MLGPCMLLLLLLGLRLQLSLGIIPVEEENPDFWNREAAEALGAACKLQPAQTAAKNL IIFLDGGMGVSTVTAARILKGQKKDKLGP E I PLAMDRFPYVALSKTYNVDKHVPD SGA TATAYLCGVKGNFQTIGLSAAARFNQCNTTRGNEVISVMNRAKKAGKSVGVT TTTR VQHASPAGTYAHTVNRNWYSDADVPASARQEGCQDIATQLISNMDIDVILGGGRKY MFRMGTPDPEYPDDYSQGGTRLDGKNLVQEWLAKRQGARYVWNRTELMQASLDP

 Tel: 1-631-559-9269 1-516-512-3133

 Email: info@creative-biomart.com  Fax: 1-631-938-8127

 45-1 Ramsey Road, Shirley, NY 11967, USA

SVTHLMGLFEPGDMKYEIHRDSTLDPSLMEMTEAALRLLSRNPRGFFLFVEGGRIDH
 GHESRAYRALTETIMFDDAIERAGQLTSEEDTSLVADHSHVFSFGGYPLRGSSIF
 GLAPGKARDRKAYTVLLYGNGPGYVLKDGARPDVTESESGSPEYRQQSAVPLDEE
 THAGEDVAVFARGPQAHLVHGVQEQTFAHVMAFAACLEPYTACDLAPPAGTTDAA
 HPGRSVVPALLPLLAGTLLLLLETATAPTRTRPLEQKLISEEDLAANDILDYKDDDDKV

Purity > 80% as determined by SDS-PAGE and Coomassie blue staining

Stability Stable for 3 months from receipt of products under proper storage and handling conditions.

Storage Store at -80 centigrade. Avoid repeated freeze-thaw cycles.

Concentration 50 µg/mL as determined by BCA

Storage Buffer 100 mM glycine, 25 mM Tris-HCl, pH 7.3.

GENE INFORMATION

Gene Name [ALPP alkaline phosphatase, placental \[Homo sapiens \(human\) \]](#)

Official Symbol [ALPP](#)

Synonyms ALPP; alkaline phosphatase, placental; alkaline phosphatase, placental (Regan isozyme); alkaline phosphatase, placental type; Regan isozyme; PLAP-1; glycerophosphatase; alkaline phosphomonoesterase; placental alkaline phosphatase 1; alkaline phosphatase Regan isozyme; ALP; PALP; PLAP; FLJ61142;

Gene ID [250](#)

mRNA Refseq [NM_001632](#)

 Tel: 1-631-559-9269 1-516-512-3133

 Email: info@creative-biomart.com  Fax: 1-631-938-8127

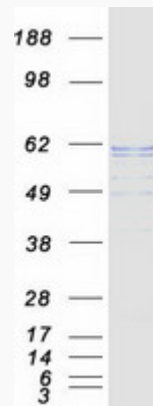
 45-1 Ramsey Road, Shirley, NY 11967, USA

Protein Refseq NP_001623

MIM 171800

UniProt ID P05187

SDS-PAGE



 Tel: 1-631-559-9269 1-516-512-3133

 Email: info@creative-biomart.com  Fax: 1-631-938-8127

 45-1 Ramsey Road, Shirley, NY 11967, USA