

Recombinant Human ALPP Protein, GST-tagged

Cat. No. ALPP-495H Lot. No. (See product label)

SPECIFICATION

Product Overview	Human ALPP full-length ORF (NP_001623.3, 1 a.a. - 535 a.a.) recombinant protein with GST-tag at N-terminal.
Species	Human
Source	Wheat Germ
Description	The protein encoded by this gene is an alkaline phosphatase, a metalloenzyme that catalyzes the hydrolysis of phosphoric acid monoesters. It belongs to a multigene family composed of four alkaline phosphatase isoenzymes. The enzyme functions as a homodimer and has a catalytic site containing one magnesium and two zinc ions, which are required for its enzymatic function. The protein is primarily expressed in placental and endometrial tissue; however, strong ectopic expression has been detected in ovarian adenocarcinoma, serous cystadenocarcinoma, and other ovarian cancer cells. [provided by RefSeq, Jan 2015]
Molecular Mass	84.4 kDa
AA Sequence	MLGPCMLLLLLLGLRLQLSLGIIPVEEENPDFWNREAAEALGAACKLQPAQTAAKNL IIFLDGDMGVSTVTAARILKGQKKDKLGPEIPLAMDRFPYVALSKTYNVDKHVPDSGA TATAYLCGVKGNFQTIGLSAAARFNQCNTTRGNEVISVMNRACKAGKSVGVTTR VQHASPAGTYAHTVNRNWYSADVPASARQEGCQDIATQLISNMDIDVILGGGRKY MFRMGTPDPEYPDDYSQGGTRLDGKNLVQEWLAKRQGARYVWNRTELMQASLDP SVTHLMGLFEPGDMKYEIHRDSTLDPSLMEMTEAALRLLSRNPRGFFLFVEGGRIDH

 Tel: 1-631-559-9269 1-516-512-3133

 Email: info@creative-biomart.com  Fax: 1-631-938-8127

 45-1 Ramsey Road, Shirley, NY 11967, USA

GHESRAYRALTETIMFDDAIERAGQLTSEEDTLSLVTADHSHVFSFGGYPLRGSSIF
 GLAPGKARDRKAYTVLLYGNGPGYVLKDGARPDVTESESGSPEYRQQSAVPLDEE
 THAGEDVAVFARGPQAHLVHGVQEQTFAHVMAFAACLEPYTACDLAPPAGTTDAA
 HPGRSVVPALLPLLAGTLLLLLETATAP

Applications

Enzyme-linked Immunoabsorbent Assay; Western Blot (Recombinant protein);
 Antibody Production; Protein Array

Notes

Best use within three months from the date of receipt of this protein.

Storage

Store at -80 centigrade. Aliquot to avoid repeated freezing and thawing.

Storage Buffer

50 mM Tris-HCl, 10 mM reduced Glutathione, pH=8.0 in the elution buffer.

GENE INFORMATION

Gene Name

ALPP alkaline phosphatase, placental [Homo sapiens]

Official Symbol

ALPP

Synonyms

ALPP; alkaline phosphatase, placental; alkaline phosphatase, placental (Regan isozyme); alkaline phosphatase, placental type; Regan isozyme; PLAP-1; glycerophosphatase; alkaline phosphomonoesterase; placental alkaline phosphatase 1; alkaline phosphatase Regan isozyme; ALP; PALP; PLAP; FLJ61142;

Gene ID

250

mRNA Refseq

NM_001632

Protein Refseq

NP_001623

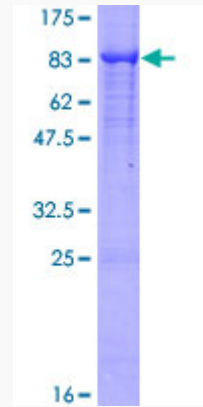
 Tel: 1-631-559-9269 1-516-512-3133

 Email: info@creative-biomart.com  Fax: 1-631-938-8127

 45-1 Ramsey Road, Shirley, NY 11967, USA

MIM 171800

UniProt ID P05187



12.5% SDS-PAGE Stained with Coomassie Blue.

Tel: 1-631-559-9269 1-516-512-3133

Email: info@creative-biomart.com Fax: 1-631-938-8127

45-1 Ramsey Road, Shirley, NY 11967, USA