

## Recombinant Human ALPP Protein, His-tagged

Cat. No. ALPP-67H Lot. No. (See product label)

### SPECIFICATION

<b>Product Overview</b>	Recombinant Human Alkaline Phosphatase is produced by our Mammalian expression system and the target gene encoding Ile23-Asp506 is expressed with a 6His tag at the C-terminus.
<b>Species</b>	Human
<b>Source</b>	HEK293
<b>ProteinLength</b>	23-506 a.a.
<b>Description</b>	Alkaline phosphatase (ALPP) is a membrane protein that exists as a homodimer. ALPP is expressed only in normal-term placenta, endocervix and fallopian tube, as well as in ovarian and proximal gastrointestinal tumors. It has been demonstrated to play a role in various biological processes including cell signaling, long-term potentiation, and cell adhesion. In addition, ALPP has been found to correlate with cognitive function loss in Alzheimer's disease (AD).
<b>Form</b>	Supplied as a 0.2 um filtered solution of 20mM Tris-HCl, 150mM NaCl, 0.2mM CaCl <sub>2</sub> , 10% Glycerol, pH7.5.
<b>Molecular Mass</b>	Predicted Molecular Weight: 53.5kDa Apparent Molecular Weight: 45-66.2kDa, reducing conditions.
<b>AA Sequence</b>	Ile23-Asp506

 Tel: 1-631-559-9269 1-516-512-3133

 Email: [info@creative-biomart.com](mailto:info@creative-biomart.com)  Fax: 1-631-938-8127

 45-1 Ramsey Road, Shirley, NY 11967, USA

<b>Endotoxin</b>	Less than 0.1 EU/ug.
<b>Purity</b>	85% as determined by SDS-PAGE
<b>Storage</b>	Store at ≤-70 centigrade, stable for 6 months after receipt. Store at ≤-70 centigrade, stable for 3 months under sterile conditions after opening. Please minimize freeze-thaw cycles.
<b>Quality Statement</b>	Purity: 85% as determined by SDS-PAGE.
<b>Shipping</b>	The product is shipped at ambient temperature. Upon receipt, store it immediately at the temperature listed below.

## GENE INFORMATION

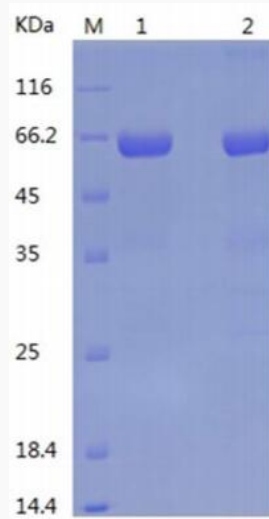
<b>Gene Name</b>	ALPP alkaline phosphatase, placental [ Homo sapiens (human) ]
<b>Official Symbol</b>	ALPP
<b>Synonyms</b>	Alkaline phosphatase; placental type; Alkaline phosphatase Regan isozyme; Placental alkaline phosphatase 1; ALPP; PLAP; ALP; IAP; ALPI; PLAP-1
<b>Gene ID</b>	250
<b>mRNA Refseq</b>	NM_001632.5
<b>Protein Refseq</b>	NP_001623.3
<b>MIM</b>	171800
<b>UniProt ID</b>	P05187

 Tel: 1-631-559-9269 1-516-512-3133

 Email: [info@creative-biomart.com](mailto:info@creative-biomart.com)  Fax: 1-631-938-8127

 45-1 Ramsey Road, Shirley, NY 11967, USA

SDS-PAGE



Final sample QC. Coomassie blue staining(12% gel).

 Tel: 1-631-559-9269 1-516-512-3133

 Email: [info@creative-biomart.com](mailto:info@creative-biomart.com)  Fax: 1-631-938-8127

 45-1 Ramsey Road, Shirley, NY 11967, USA