

Recombinant Human ALS2 Protein, GST-tagged

Cat. No. ALS2-497H **Lot. No.** (See product label)

SPECIFICATION

Product Overview	Human ALS2 partial ORF (AAH29174, 221 a.a. - 320 a.a.) recombinant protein with GST-tag at N-terminal.
Species	Human
Source	Wheat Germ
Description	The protein encoded by this gene contains an ATS1/RCC1-like domain, a RhoGEF domain, and a vacuolar protein sorting 9 (VPS9) domain, all of which are guanine-nucleotide exchange factors that activate members of the Ras superfamily of GTPases. The protein functions as a guanine nucleotide exchange factor for the small GTPase RAB5. The protein localizes with RAB5 on early endosomal compartments, and functions as a modulator for endosomal dynamics. Mutations in this gene result in several forms of juvenile lateral sclerosis and infantile-onset ascending spastic paralysis. Multiple transcript variants encoding different isoforms have been found for this gene. [provided by RefSeq, Oct 2008]
Molecular Mass	36.74 kDa
AA Sequence	PSQDLKPVPERCNQCSQLLITMTDKEDHVIISDSHCPLGVTLTESQAENHASTALS PSTETLDRQEEVFENTLVANDQSVATELNAVSAQITSSDAMSS
Applications	Enzyme-linked Immunoabsorbent Assay; Western Blot (Recombinant protein); Antibody Production; Protein Array

 Tel: 1-631-559-9269 1-516-512-3133

 Email: info@creative-biomart.com  Fax: 1-631-938-8127

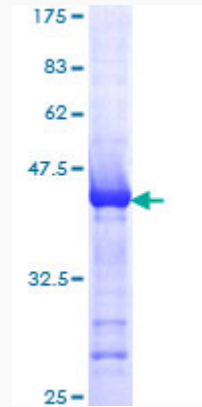
 45-1 Ramsey Road, Shirley, NY 11967, USA

Notes	Best use within three months from the date of receipt of this protein.
Storage	Store at -80 centigrade. Aliquot to avoid repeated freezing and thawing.
Storage Buffer	50 mM Tris-HCl, 10 mM reduced Glutathione, pH=8.0 in the elution buffer.
GENE INFORMATION	
Gene Name	ALS2 amyotrophic lateral sclerosis 2 (juvenile) [Homo sapiens]
Official Symbol	ALS2
Synonyms	ALS2; amyotrophic lateral sclerosis 2 (juvenile); ALS2CR6, amyotrophic lateral sclerosis 2 (juvenile) chromosome region, candidate 6; alsin; amyotrophic lateral sclerosis 2 protein; amyotrophic lateral sclerosis 2 chromosomal region candidate gene 6 protein; ALSJ; PLSJ; IAHSP; ALS2CR6; FLJ31851; KIAA1563; MGC87187;
Gene ID	57679
mRNA Refseq	NM_001135745
Protein Refseq	NP_001129217
MIM	606352
UniProt ID	Q96Q42

 Tel: 1-631-559-9269 1-516-512-3133

 Email: info@creative-biomart.com  Fax: 1-631-938-8127

 45-1 Ramsey Road, Shirley, NY 11967, USA



12.5% SDS-PAGE Stained with Coomassie Blue.

 Tel: 1-631-559-9269 1-516-512-3133

 Email: info@creative-biomart.com  Fax: 1-631-938-8127

 45-1 Ramsey Road, Shirley, NY 11967, USA